

Revista Brasileira de Zoologia



This work is licensed under a Creative Commons Attribution-NonCommercial 4.0 International License. Fonte:

<https://www.scielo.br/j/rbzool/a/fdkXgq4HfmsnNVP5ykPPrxf/?lang=en#>. Acesso em: 10 ago. 2021.

REFERÊNCIA

BECKER, Vitor O. A new *Nyceryx* Boisduval (Lepidoptera, Sphingidae) from Central Brazil. **Revista Brasileira de Zoologia**, v. 18, n. 1, p. 159-161, 2001. DOI: <https://doi.org/10.1590/S0101-81752001000100019>. Disponível em: <https://www.scielo.br/j/rbzool/a/fdkXgq4HfmsnNVP5ykPPrxf/?lang=en#>. Acesso em: 10 ago. 2021.

A new *Nyceryx* Boisduval (Lepidoptera, Sphingidae) from Central Brazil

Vitor O. Becker¹

ABSTRACT. *Nyceryx brevis* sp. n., is described from Central Brazil.

KEY WORDS. Sphingidae, *Nyceryx*, Cerrado, Brazil, Neotropical

After over 30 years of intensive collecting in Central Brazil, five species of sphinx moths belonging to *Nyceryx* Boisduval, [1875], were recorded by the author: *N. alophus* (Boisduval, [1875]), *N. coffeae* (Walker, 1856), *N. continuus* (Walker, 1856), and two endemic undescribed species. One of the last two was described as *Nyceryx furtadoi* HAXAIRE (1996: 351) based on specimens collected in the states of Mato Grosso and Goiás, Central Brazil. The other is being described here. The type material is deposited in the author's collection, Brasília, Distrito Federal.

Nyceryx brevis sp. n.

Figs 1-3

Male (Fig. 1), fore wing length 2-2.2 cm. Head, thorax, fore wings and abdomen covered with brown, whitish-tipped scales. Head with a dark brown band dorsally, which continues to mid thorax; palpi brown, 2nd segment with a conspicuous silvery-white dot distally. Thorax and base of abdomen dark brown subdorsally; tegulae dark brown, edged white posteriorly; tibiae and tarsi white dorsally. Fore wings with irregular, oblique, subrectangular patch from below cell to mid dorsum, connected to mid costa by a double fascia; a pair of dots at end of cell: a lower, proximal, large, and a distal, small at upper end of cell; three parallel, sinuous lines beyond dots and before postmedial fascia, from costa to dorsum; postmedial fascia dark brown, forming an even arch from apex to tornus; cilia concolorous, pale basally. Hind wings ochreous, tinged reddish brown; termen darkening gradually towards tornus; double graysh, arched, bands near tornus; dorsum ochreous, tinged reddish brown. Underside of both wings reddish brown; three ill-defined, sinuous lines beyond distal 3rd; graysh towards termen.

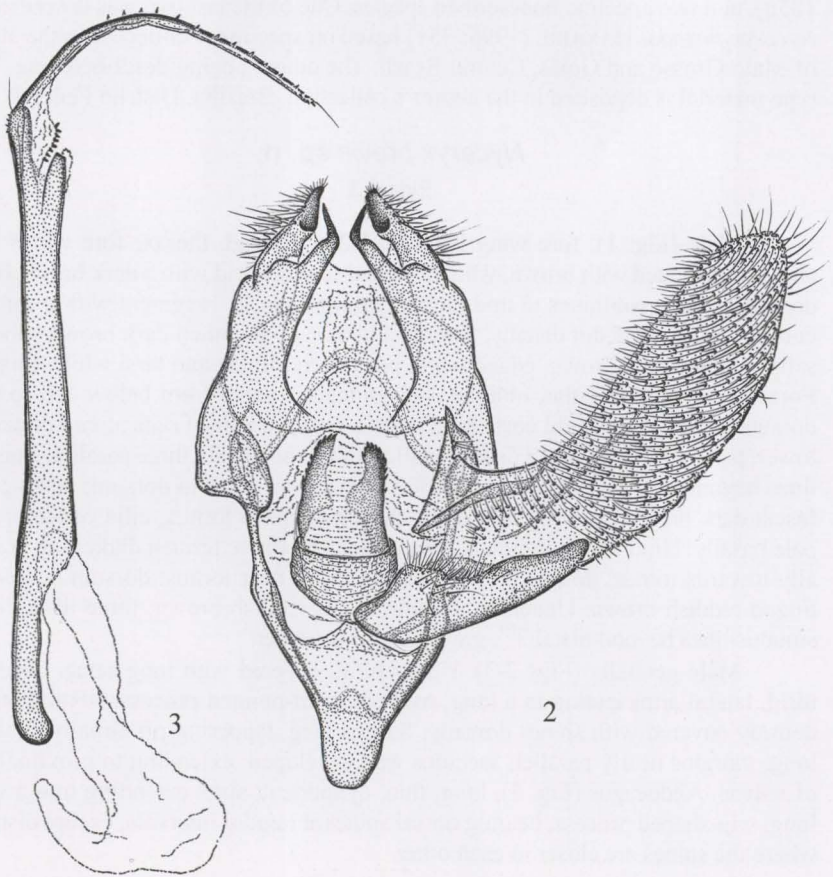
Male genitalia (Figs 2-3). Uncus bifid, covered with long setae. Gnathos bifid, lateral arms ending in a long, twisted, sharp-pointed process. Juxta tubular, densely covered with spines dorsally. Saccus long, tapering proximally. Valvae long; margins nearly parallel; sacculus well developed, extending to proximal 3rd of valvae. Aedoeagus (Fig. 3), long, thin, cylindrical; apex extending into a very long, wip-shaped process, bearing dorsal spines at regular intervals, except distally where the spines are closer to each other.

1) Research Associate, Departamento de Zoologia, Universidade de Brasília. P.O. Box 04525, 70919-970 Brasília, Distrito Federal, Brasil. E-mail: vbecker@rudah.com.br

Holotype male. BRAZIL, *Bahia*: Morro do Chapéu, 1400 m, 23-24.IV.1991, Becker *leg.* [78175]. Paratypes. 1 male, same data as holotype; 1 male, Minas Gerais, Belo Horizonte, [Retiro das Pedras], 1300 m, 2.I.1976, Becker, *leg.* [18273].

Remarks. This is the smallest species in the genus. Its pattern resembles that of *N. continuus* (Walker, 1856), but is easily distinguished by its small size, less than two-thirds the size of the former.

This is either a very rare species or it is not readily attracted to light. After 30 years of intensive collecting in Central Brazil, only the three specimens listed above were collected. Both collecting localities, despite being much apart, are similar: both are located on top of rocky elevations covered with scattered low savanna trees, and bushes.



Figs 2-3. Male genitalia of *Nyceryx brevis* sp. n., paratype.



Fig. 1. Adult male of *Nyceryx brevis* sp. n., holotype, dorsal view.

ACKNOWLEDGEMENTS. The author is most grateful to Wellington Cavalcanti, staff artist, Centro de Pesquisa Agropecuária dos Cerrados (EMBRAPA), for producing the line drawings.

REFERENCE

HAXAIRE, J. 1996. Description d'un nouveau Sphingidae bresilien: *Nyceryx furtadoi* n. sp. (Lepidoptera Sphingidae). *Lambillionea* 46: 351-353.

Recebido em 26.III.2000; aceito em 05.IV.2001.