



**UNIVERSIDADE DE BRASÍLIA - UNB
INSTITUTO DE GEOCIÊNCIAS - IG**

**XGIS FLEX: UM FRAMEWORK LIVRE PARA O
DESENVOLVIMENTO DE SISTEMAS DE INFORMAÇÕES
GEOGRÁFICAS PARA A WEB**

MARIANO PASCUAL

DISSERTAÇÃO DE MESTRADO Nº 47

**Brasília - DF
Março de 2013**



**UNIVERSIDADE DE BRASÍLIA - UNB
INSTITUTO DE GEOCIÊNCIAS - IG**

**XGIS FLEX: UM FRAMEWORK LIVRE PARA O
DESENVOLVIMENTO DE SISTEMAS DE INFORMAÇÕES
GEOGRÁFICAS PARA A WEB**

MARIANO PASCUAL

Dissertação de mestrado submetida ao Instituto de Geociências, Departamento de Geologia Geral e Aplicada da Universidade de Brasília, como parte dos requisitos para obtenção do Título de Mestre em Geociências Aplicadas.

**Orientador: Prof. Dr. George Sand Leão
A. de França**

**Co-orientadora: Prof. Dra. Maristela
Terto de Holanda**

Banca Examinadora:

Dr. George Sand L. Araújo de França

Orientador

Dr. Henrique Llacer Roig

Membro Interno

Dr. Ricardo A. de Medeiros Valentim

Membro Externo

Brasília - DF
Março de 2013

FICHA CATALOGRÁFICA

Pascual, Mariano

XGIS Flex: um framework livre para o desenvolvimento de Sistemas de Informações Geográficas para a web. / Mariano Pascual; orientação de George Sand. Brasília, 2013

62p.

Dissertação de Mestrado (M) – Universidade de Brasília / Instituto de Geociências, 2013

1. WebGIS; 2. Web 2.0; 3. Rich Internet Application; 4. Framework.

REFERÊNCIA BIBLIOGRÁFICA

Pascual, M. XGIS Flex: um *framework* livre para o desenvolvimento de Sistemas de Informações Geográficas para a web. Brasília, Instituto de Geociências, Universidade de Brasília, 2013, 62p. Dissertação de Mestrado.

CESSÃO DE DIREITOS

NOME DO AUTOR: Mariano Pascual

TÍTULO DA DISSERTAÇÃO DE MESTRADO: XGIS Flex: um *framework* livre para o desenvolvimento de Sistemas de Informações Geográficas para a web.

GRAU: Mestre ANO: 2013

É concedida à Universidade de Brasília permissão para reproduzir cópias desta dissertação de mestrado e para emprestar ou vender tais cópias somente para propósitos acadêmicos e científicos. O autor reserva-se a outros direitos de publicação e nenhuma parte desta dissertação de mestrado pode ser reproduzida sem a autorização por escrito do autor.

Mariano Pascual
699.047.231-68
mariano.pascual@ibama.gov.br

*Dedico este trabalho à
Michelle Ribeiro e Luciana Pascual:
minhas esposa e filha.*

AGRADECIMENTOS

À minha esposa Michelle Ribeiro e à minha filha Luciana Pascual, pela paciência e carinho incondicional.

Ao Instituto de Geociências - IG da Universidade de Brasília – UnB, pela oportunidade que me foi dada de encarar mais uma empreitada científica e obtenção do título de Mestre em Geociências Aplicadas.

Ao Dr. George Sand Leão Araújo de França, pelo apoio e orientação em todas as fases deste projeto de mestrado.

À Dra. Maristela de Holanda, pela orientação do trabalho e troca de conhecimentos sobre Computação.

Ao Dr. Edson Eyji Sano, pelo constante apoio e incentivo neste projeto e em outros momentos de minha carreira profissional.

Ao Centro de Sensoriamento Remoto - CSR do IBAMA, pela oportunidade de uso de sua estrutura computacional nos momentos de provas deste projeto.

SUMÁRIO

CAPITULO 1 APRESENTAÇÃO, OBJETIVOS E ESTRUTURA DA DISSERTAÇÃO	
1.1 Apresentação.....	1
1.2 Objetivos.....	1
1.2.1 Objetivo geral.....	4
1.2.2 Objetivos específicos.....	4
1.3 Estrutura da dissertação.....	4
CAPÍTULO 2 ARQUITETURA PARA SISTEMA DE INFORMAÇÕES GEOGRÁFICAS NA WEB – WEBGIS.....	6
2.1 Introdução ao artigo publicado no Geoprocessing 2012.....	7
CAPÍTULO 3 XGIS FLEX: A FREE AND OPEN SOURCE FRAMEWORK FOR DEVELOPMENT OF THE GEOGRAPHIC INFORMATION SYSTEMS ON THE WEB.....	23
3.1 Introdução ao artigo submetido à revista Journal of Brazilian Computer Society.....	24
CAPÍTULO 4 CONSIDERAÇÕES FINAIS.....	40
ANEXO 1 XGIS FLEX: A FREE AND OPEN SOURCE FRAMEWORK FOR THE DEVELOPMENT OF THE GEOGRAPHIC INFORMATION SYSTEMS ON THE WEB.....	41
A.1 Introdução ao artigo publicado no Geoprocessing 2013.....	42

RESUMO

Esta dissertação de mestrado apresenta dois estudos de caso relacionados a arquiteturas de implantação de sistemas de informações geográficas (SIG) em ambiente web que culminaram no desenvolvimento de um *framework* composto por um conjunto de componentes de apoio à construção de novos *softwares* de SIG para web. O primeiro estudo foi realizado com foco na interoperabilidade de serviços de mapas na web, contemplando principalmente as funções de consulta e disponibilização de dados em formatos diversos. Para viabilizar a troca e integração de informações espacializadas, foi necessário o desenvolvimento de alguns componentes que foram escritos sobre tecnologias proprietárias tais como Esri Flex API. Entendidas as limitações que um motor central de código fechado poderia trazer ao objeto principal do estudo, isto é, o desenvolvimento de uma arquitetura de intercâmbio de informações geográficas, surgiu a idéia de construir um conjunto de *software* que contornassem tais dificuldades. O segundo estudo foi realizado com foco na elaboração de um *framework* livre para desenvolvimento de SIG em ambiente web de padrão *Rich Internet Application* (RIA) e que seguisse conceitos da Web 2.0, possibilitando a indexação e visualização de dados provenientes de diferentes tipos de mídia (fotografias, vídeos, documentos) que fossem aderentes aos padrões da *Open Geospatial Consortium* (OGC), mas que, ainda assim, fossem possíveis de serem compartilhadas com outros formatos de dados. Este último estudo buscou ainda reduzir a complexidade e custos de implantação de projetos dessa natureza e facilitar a customização por parte de usuários finais. Ao conjunto de códigos desenvolvidos e sua arquitetura, foi dado o nome de XGIS Flex Framework.

Palavras-chave: webgis, web 2.0, rich internet application, framework.

ABSTRACT

This MSc. Thesis presents two study cases related to the architectures of implementation of geographical information systems (GIS) in web environment that ended in the development of a *framework* composed by a set of components supporting the preparation of new web GIS software packages. The first study was conducted focused on the interoperability of map services in the web, mainly covering the functions of consultation and release of data at varying formats. In order to enable exchange and integration of spatial information, it was necessary to develop components based on proprietary technologies like ESRI Flex API. After understanding the limitations that a central engine of closed source code could bring to the main object of study, that is, the development of an architecture for the exchange of geographic information, we came out with the idea of building a set of software that would circumvent such difficulties. The second study was conducted focusing on the preparation of a free *framework* for development of GIS in an environment of Rich Internet Application (RIA) and Web 2.0 concepts. The purpose here was to enable indexing and visualization of data from different types of media (photos, videos, documents) that were adherent not only to the standards of the Open Geospatial Consortium (OGC), but also to other data formats. The latter study also sought to reduce the complexity and costs of implementation of such projects and to facilitate customization by end users. This set of developed softwares and its architecture was named XGIS Flex Framework.

Keywords: webgis, web 2.0, rich internet application, framework.

CAPÍTULO 1-

Apresentação, objetivos e estrutura da dissertação.

1.1. Apresentação

Um Sistema de Informação Geográfica (SIG) é frequentemente definido como a combinação de um sistema de gerenciamento de banco de dados, um conjunto de operações de exploração de dados, e um sistema de visualização gráfica destas informações que é usado para realizar análises geoespaciais.

Muitos Sistemas de Informações Geográficas desenvolvidos para web vem sendo utilizados, entretanto, há interessantes desafios no que tange ao desenvolvimento e consequente implantação destes tipos de aplicação. Há inúmeras fontes de dados vetoriais e matriciais arquivadas e espalhadas mundialmente nos mais distintos formatos, ora apenas como simples arquivos, ora organizados dentro de Sistemas Gerenciadores de Bancos de Dados com suas extensões espaciais. Não suficiente a diferenciação de formatos de armazenamento quando tratamos de dados geográficos, temos ainda distintos sistemas de projeção, escalas e um grande tamanho de arquivos, quando tratamos de dados do tipo *raster*.

A Open Geospatial Consortium (OGC), vem atuando fortemente no estabelecimento de padrões de intercâmbio de informações oriundas de bases de dados heterogêneas. Para garantir a interoperabilidade de dados.

Os fabricantes de SGBDs têm trabalhado na melhoria constante das extensões espaciais desenvolvidas para seus produtos. Atualmente, é encontrada uma grande gama de operações geoespaciais que podem ser realizadas dentro deste próprio tipo de sistemas. Operadores relacionais e espaciais,

suporte a tecnologias 3D, regras topológicas e aos mais diversos tipos de objetos geográficos não são mais novidades neste tipo de software.

Há uma crescente popularização no acesso e uso de SIGs para web em curso neste momento, softwares tais como *Google Maps*, *Google Earth*, *Microsoft Bing Maps*, *Yahoo Maps* e *OpenStreet Maps* são cada vez mais comuns no cotidiano de usuários da internet. Todos estes softwares se apresentam como bons exemplos de implementações de tecnologia Web 2.0 por meio de *Rich Internet Application* (RIA). São aplicativos muito interativos e abrem a possibilidade não apenas de visualização de informações pelo prisma espacial mas, também pela troca de informações em diferentes formatos de mídias tais como vídeos, fotografias e documentos, todos sobrepostos e indexados espacialmente aos mapas visualizados.

Neste ambiente, a comunidade de software livre vem fazendo grandes avanços, tanto em sistemas gerenciadores de bancos de dados geográficos, como em servidores de alta performance para geração de mapas interativos. Há inclusive inúmeras e muito bem elaboradas bibliotecas de apoio a construção de interfaces gráficas de SIGs para web. Produtos comerciais para desenvolvimento de SIGs são normalmente muito dispendiosos e possuem elevado conjunto de requisitos de implantação. Naturalmente, estes têm seus códigos-fonte fechados por motivos comerciais.

Neste projeto, um *framework* para desenvolvimento de SIGs para web de rápida e fácil implantação é apresentado. Além de ser livre, este segue os conceitos da Web 2.0, os da OGC no que tange a interoperabilidade, é uma aplicação do tipo RIA com bom aspecto de apresentação de informações espaciais e textuais. Os implantadores desta solução não necessitam serem programadores de computadores, bastando apenas a edição de arquivos-texto para que a aplicação final fique customizada e adequada ao uso que se queira dar. Podem ser adicionados serviços web de mapas,

serviços de legendas, títulos do sistema, logotipos e logomarcas, zoom máximo e inicial da aplicação e a configuração das ferramentas individualmente disponibilizadas.

O *framework* possui uma camada de apresentação que serve como uma interface gráfica para com o usuário (GUI) onde são exibidos os resultados de dados textuais e espaciais, permitindo que os usuários finais possam interagir com os serviços de *back-end*. Esta interface fica instalada na camada de servidor de aplicações e se comunica com múltiplas fontes de dados por meio da camada de integração de dados; também é executada sobre o mesmo servidor de aplicações e interage com usuários finais para analisar e manipular dados provenientes de serviços de provedor de dados. A camada do servidor de banco de dados atua como provedor de dados e operações. Um conjunto de serviços remotos trabalha simu com o provedor de dados para compartilhamento de informações. Cada serviço oferece uma série de interfaces simultaneamente através das quais, o aplicativo cliente pode resgatar dados remotos e manipulá-los, assim, além dos próprios dados é possível também trazer metadados, legendas e resultados de operações.

A simplificação do modelo multi-camadas praticado na implantação de SIGs para web, trouxe outros resultados que vão além da necessidade de interação com inúmeros e distintos softwares dispostos como camadas e acarretou na redução de tempo de instalação destes tipos de aplicação. Outra vantagem da proposita apresentada está no fato do *framework* ser de código compilado, mais seguro, e de utilizar largamente a capacidade de processamento local da máquina cliente, tornando mais baixos os custos de instalação do lado servidor.

Buscou-se, durante todo o desenvolvimento do *framework*, um forte acoplamento com o servidor de mapas interativos e interoperabilidade Geoserver Java, já que o mesmo se apresenta como um importante provedor de serviços web de padrão OGC (WMS, WFS, WCS), entretanto, quaisquer servidores de mapas que disponibilizem seus serviços no padrão OGC podem ser usados e integrados a

este. Foram testados no projeto os softwares ArcGIS Server, Erdas Apollo, Geoserver e MapServer, todos com excelentes resultados de aplicação à ferramenta desenvolvida.

1.2 Objetivos

1.2.1 Objetivo geral

Desenvolver e disponibilizar um *framework* para o rápido desenvolvimento e implantação de Sistemas de Informações Geográficas (SIG) para ambiente web, que seja livre, baseado nos conceitos *Rich Internet Application* (RIA) e Web 2.0 e nos padrões da OGC.

1.2.2 Objetivos específicos

- a) Simplificar a construção de Sistemas de Informações Geográficas para web por meio da redução de camadas necessárias neste tipo de ambiente;
- b) Auxiliar na rápida implantação de SIGs para web aproveitando-se do conjunto de códigos desenvolvidos;
- c) Disponibilizar por meio do conjunto de códigos desenvolvidos, um ambiente pelo qual fosse possível a extensão e criação de novas classes e componentes visando a concepção de novas funcionalidades ou customização de funcionalidades já existentes no *framework*;
- d) Tornar os usuários do *framework* independentes de softwares proprietários no processo de desenvolvimento e implantação de SIGs para web; e
- e) Disponibilizar uma plataforma de acesso às informações geoespaciais oriundas de serviços web de mapas de terceiros com um conjunto mínimo de ferramentas de apoio.

1.3 Estrutura da dissertação

Esta dissertação foi dividida em quatro capítulos e um anexo. O primeiro deles apresenta brevemente a proposta do *framework* desenvolvido ao leitor, os objetivos dos desenvolvimentos realizados e a organização do documento. O segundo capítulo, em formato de artigo, apresenta o estudo intitulado “*An Architecture for Geographic Information Systems on the Web - WebGIS*” que foi publicado na Conferência Internacional *Geoprocessing 2012* em Valencia, na Espanha. No capítulo três, é apresentado o artigo intitulado “*XGIS Flex: A Free and Open Source Framework for Development of the Geographic Information Systems on the Web*”. Este por sua vez foi submetido ao *Journal of the Brazilian Computer Society*. O quarto capítulo traz uma síntese da relação entre os estudos e a conclusão. Ao final, no Anexo 1, é apresentado o artigo publicado na Conferência Internacional *Geoprocessing 2013* em Nice, na França.

CAPÍTULO 2-

Arquitetura para Sistema de Informações Geográficas na Web – WebGIS

[Artigo publicado no Geoprocessing 2012]

Abstract - Geographic Information Systems for the web (webGIS) are being implemented for different purposes. In this context, one of the greatest challenges is to integrate different sources of geographic data, as well as the visualization of this information using maps in an interactive environment. This paper presents a proposal for architecture for the webGIS with interoperability between different sources of heterogeneous data, as well as the visualization of maps in different formats with components implemented with Web 2.0 technology. The architecture was validated through a case study that implemented a webGIS to academic research at the Geosciences Institute of the University of Brasilia.

2.1 Introdução ao artigo publicado no *Geoprocessing* 2012

O seguinte artigo foi publicado no *Geoprocessing* 2012 em Valência na Espanha e se refere à arquitetura que foi testada e materializada por meio do desenvolvimento de um SIG para o compartilhamento e pesquisa de monografias de conclusão de curso do Instituto de Geociências da Universidade de Brasília. Este projeto aguarda a disponibilização de um ambiente computacional para sua instalação. Este trabalho resultou-se muito importante em termos de resultados de testes e foi este quem nos direcionou para a construção de um *framework* de apoio ao desenvolvimento de SIGs de padrão RIA e Web 2.0 livre.

Nesta primeira versão, havíamos utilizado a API Flex da ESRI e anexa a esta, fomos desenvolvendo e estendendo um conjunto de classes e componentes utilizando *Action Script* dentro do próprio Adobe FLEX SDK. Também, intercambiamos nesse desenvolvimento serviços web de mapas com distintas instituições e começamos a publicar dados que não estavam em bancos de dados geográficos de maneira espacial por meio dos serviços web criados.

Posteriormente e logo após validarmos a estrutura de interoperabilidade, começamos a estruturar o novo motor de navegação de mapas dentro do conceito de *framework* para desenvolvimento apoiado de aplicações. Os códigos que antes estavam portados para a API ESRI foram adequados ao novo contexto e passaram a ganhar mais e novas funcionalidades. Com a possibilidade de alterações no motor do novo *framework*, foi possível adaptar-se a outros padrões de acesso a dados geográficos e a intercambiar informações com maior agilidade por meio dos novos códigos construídos.

An Architecture for Geographic Information Systems on the Web – WebGIS

Mariano Pascual, Eluzai Alves, Tati de Almeida,
George Sand de França, Henrique Roig
Geosciences Institute
University of Brasilia, UnB
Brasilia, Brazil
mariano.pascual@ibama.gov.br

Maristela T. Holanda
Department of Computer Science
University of Brasilia, UnB
Brasilia, Brazil
mholanda@cic.unb.br

Abstract - Geographic Information Systems for the web (webGIS) are being implemented for different purposes. In this context, one of the greatest challenges is to integrate different sources of geographic data, as well as the visualization of this information using maps in an interactive environment. This paper presents a proposal for architecture for the webGIS with interoperability between different sources of heterogeneous data, as well as the visualization of maps in different formats with components implemented with Web 2.0 technology. The architecture was validated through a case study that implemented a webGIS to academic research at the Geosciences Institute of the University of Brasilia.

Keywords-Geographic Information System; web GIS; Geographic Database; Map Visualization.

Introduction

Geographic data, having been collected, is now available in a wide variety of formats. Geographic data is available in files, databases or Geographic Information Systems (GIS) [1]. A GIS is frequently defined as the combination of a database management system, a set of operations for exploring data, and a graphic display system that is used for geospatial analysis. These GIS analyses have the main purpose of supporting decision making and modeling some of the possible consequences

of those decisions [2][8][16][20]. GIS environments are also cartographic tools that facilitate building maps and examining the impacts of changes to the maps interactively [1][3][5][9][11][12].

Currently, GIS on the web (webGIS) is being developed, and one challenge in that environment is interoperability among heterogeneous databases. For interoperability of the data, the web services technology is being used [15]. The standard set by the OGC (OpenGIS Consortium) proposes the open service architecture of web GIS to support data-interoperability. And, it suggests the GML (Geographic Markup Language) based on XML to exchange the data between the web client and the web GIS [6][7]. REST [22] technology is also used to support interoperability with geographical databases.

For the visualization of maps in an interactive way, Web 2.0 technology is being applied through different components of RIA (Rich Internet Application). As is observed in [10], this technology is being applied for the development of web-GIS. Web mapping applications such as Google Maps, Google Earth, Microsoft Bing Maps and Yahoo Maps are usually considered good examples of Web 2.0 [15].

This paper presents an architecture for webGIS based on Web 2.0 and interoperability among different geographical data. The architecture is based on web services and can be used with open or owner map and database servers.

The content of this paper is divided into the following sections: 2 – basic concepts about webGIS are presented; 3 – the proposed architecture is defined; 4 – related works, which are analyses; 5 – Case Study, where the architecture was used to develop the GIS for the Geosciences Institute of the University of Brasilia; and finally, 6 – the conclusions.

WebGIS

Web GIS is any GIS that uses Web technologies. The simplest form of webGIS should have at least a server and a client, where the server is a Web application server, and the client is a Web browser, a desktop application, or a mobile application [15][4].

With regard to the architecture of a webGIS, the architecture based on three layers is most commonly used: User Interface Layer, Application Server Layer and Database Layer [17][19][21]. Some authors considered four layers, where the integration layer is added on the architecture webGIS, which is based on web services [14].

The User Interface layer serves as a graphic user interface (GUI) to present the result of spatial data, allowing the end users to interact with the backend services

The Application Server layer communicates with multiple data sources via the data integration layer, and interacts with end users to analyze and manipulate data coming from data provider services

The Database layer of data provider services, is a set of remote data provider services for data sharing. Each data provider service offers a set of interfaces through which client applications can pull remote data in and manipulate the data.

Proposed Architecture

The model proposed (Figure 1) presents an abstract architecture for a webGIS. In this model we observe a set of classes developed that integrate with one another and servers of interoperability, and web services in the treatment and insertion of information, as well as in the availability of data for the final user.

The use of web services and the development of classes that read and organize the overlay of data provided with servers of owner interactive map or of open software, provide a hybrid tool that can

use WMS, WCS or REST for the presentation of layers on the web in a single RIA application utilizing web services.

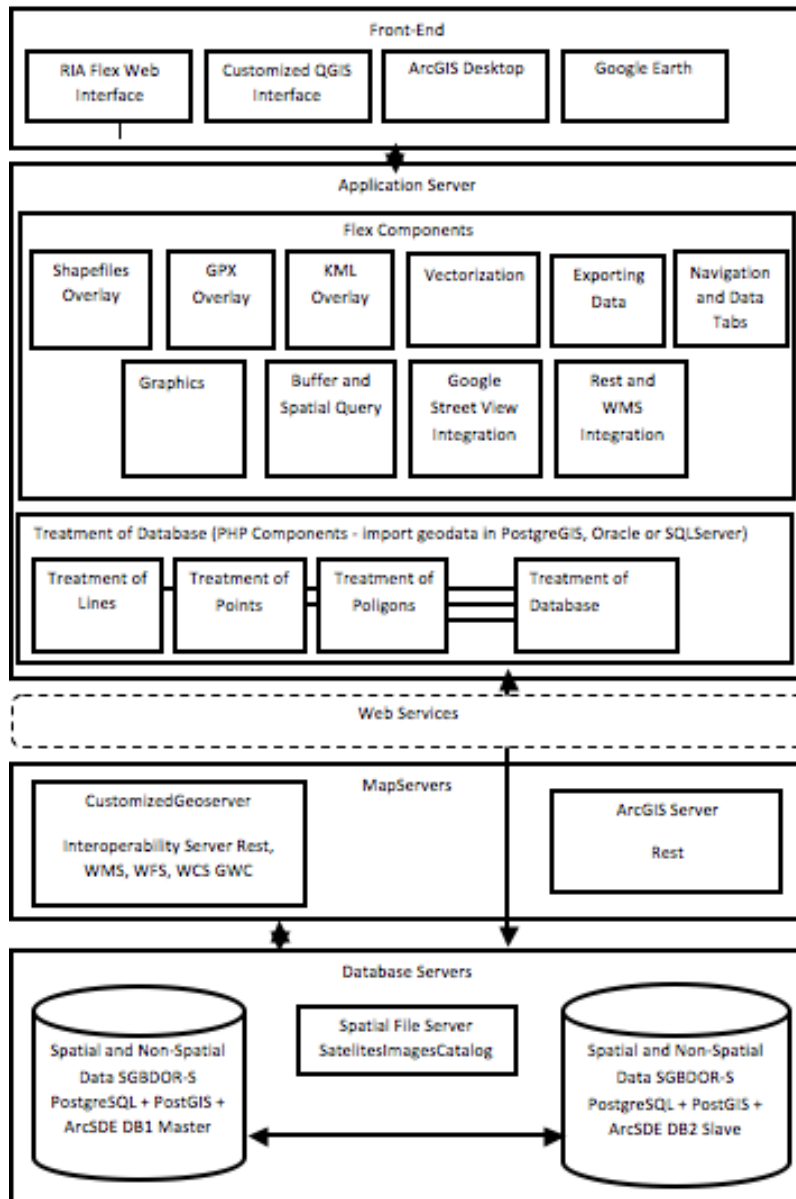


Figure 1. Abstract Model of the proposed architecture

Each component of the abstract architecture is described as follow.

- Shapefile Overlay

Component that enables the opening of shapefile files and their attributes, providing the overlay of geometries available in .shp files in the web Flex environment, the constant attributes in .dbf files are

presented in a tabular format and related to the correspondent geometry. The features that can be viewed are: line, point, or polygon. In order to do this simply click on the tool of the folder with the zipped file containing minimally formatted .shp, .shx and dbf. Files. In case the set of files is projected in a system distinct to the map base, the inclusion of the compacted file .prj is necessary for the system to complete re-projection.

- GPX Overlay

The great quantity of Garmim brand GPS field equipment users was an enormous motivator in the development of this component, which makes the overlay of files downloaded directly from equipment of this type possible. All of the waypoints available to track overlays of a line where the initial point is presented in green, the path in yellow and the end in red are presented. The attributes given to the paths are shown in a floating table.

- KML Overlay

This class provides the opening and comparison of the routes generated in Google Map platforms, and also in simple files in KML format, the available attributes in the referred to file are also presented in splints through floating panels.

- Vectorization

The class that serves vectorization and release in distinct database formats such as lines, points and polygons. Algorithms for the calculation of the area and perimeter are also in this class, if sending to the database is not necessary, the user can opt to save the designed features on a local disc.

- Graphics

Tools for which geographic database tables, or simply web services about them, can be chosen by way of selection boxes, from which one can select numerical attributes and vectorize an area on the screen resulting in pizza or bar form graphics. These are interesting analytical tools for statistical census data, however, with geographic presentation and selection.

- Exporting Data

Totally integrated components or Geoserver Java interactive server maps, can be made through this class, with the selection and later exportation and download of layers or a part of them in diverse formats such as shapefile, csv. Pdf. Xls. Kml. Kmz. Jpg. Png and others.

- Buffer with Spatial Query

Tools of bufferization through which complete features or a part of their registers can be used to create buffers. After the conclusion of this step the user of the class can once again select features, however, now to execute special queries about the buffer presented on screen. The result presented can be saved so that it is not necessary to complete the whole process again.

- Google Street View Integration

A developed component that integrates with the Google Street View Platform, so that the information can be visualized in two dimensions, and through which one can navigate on maps, in addition to visualizing, in a part of the frame, the entire Google Street platform base, which always synchronizes the observation points with the street navigation.

- Integrated Overlay REST and WMS

This is the most important component developed, since it makes possible the integration of different formats of interactive maps hybridizing the framework, through which one can make use of standard REST web services available through the software ArcGIS Server as well as the Geoserver and makes the overlay transparent to the user of standard WMS and WFS web services.

- Navigation and Data Tabs

A component of presentation and formatting grids was built aimed at improving the visual aspect of register lists extracted from the database. There is a great interaction between the navigation and consultation of attributes related to the geometry visualized.

- Treatment of Geographic Database

This component aims at adopting the tool of a set of classes capable of treating incoming information from the interface that will be sent to the database, and through this one can select which type of database will be used and the classes will be the interactions necessary for a correct treatment of distinct types between the manufacturers of SGBDs. Treatment of Geographic Features: set with the minimum rules necessary to avoid classical errors at the moment of vectorization, such as the creation of polygonal ties. Through this, perimeter and area are also calculated and different symbologies can be attributed to the design features, such as, completing the recording in databases or in the text format to be saved in a locale and overlay.

Development of the Architecture

For the development of the SIG, various program languages were chosen, including: Flex, Action Script, PHP, Java Script and Ajax. Java programming language was used in the customizations done for the Geoserver software, and was the same language in which the software was written.

In the development of the SIG web interface, the standard RIA, the Flex and Action Script was used. The API for Flex of ESRI was used as the core of the application. Beginning with the basic navigator, diverse components were used in the solution. Among them components capable of doing the overlay of layers in WMA and WCS format provided by software such as Geoserver, turning the navigator maps in SIG hybrid, capable of consuming data originating in the ArcGIS Server and/or the Geoserver. Another point to be considered is the framework developed in PHP language, oriented to objects and in standard MVC—Model View Controller. This server not only does dynamic construction of the electronic forms, but also treats data stemming from vectorization and, afterward, stores them in special extensions available in databases such as PostGIS of the PostgreSQL and Spatial of the Oracle.

Related Work

The proposal presented in this paper is the architecture of webGIS, which has the characteristic of components based on web 2.0 for visualization of spatial data. Our proposal has a layer of interoperability with free and own mapping server and different Geo-DBMS.

Shunfu Hu [19] presented an architecture for development web-based GIS applications. The webGIS was based on Microsoft Visual Basic. Microsoft Internet Information Server (MIIS) was employed as web Server and ESRI MapObjects Internet map Server as map Server. Unlike our proposal, the architecture present in [19] is not interoperable.

Boucelma et al presented [1] a WFS-based mediation system for GIS interoperability. The functional architecture of the geo- graphic mediation system is mainly composed of three layers: a GIS mediator, Web Feature Servers (WFS) and data sources. In [1] the integration of query capabilities available at the sources and a geographical query language to access and manipulate integrated data is addressed. Differently, our architecture integrates the data source and the components Treatment of Database and Buffer and spatial query.

Majchrzak and More in [10] cover how Web 2.0 technologies can be used to develop GIS through interaction with users. In [10] the aide volunteers in disaster situations is presented, using Google technologies. Our proposal is an abstract with different front-end, map server and Geo-DBMS, which can be used with Google technologies or others.

Zongyao and Yichun proposed, in [14], a service-oriented architecture for spatial data integration (SOA-SDI) of a large number of available spatial data sources that are physically sitting at different places, of which the development web-based GIS systems were based on SOA-SDI, allowing client applications to pull in, analyze and present spatial data from those available spatial data sources. Lu, in [18], defined a GIS platform architecture as a multi-layer architecture that integrated the web service, Servlet/JSP functions and GIS APIs based on the framework of J2EE infrastructure. The GIS system can

be accessed by many different computers in networks with different kinds of operating systems. It is a distributed, platform independent system architecture. The data are stored and managed with EJB. Frehner and Brandli [20] presented the Virtual Database that consists of a framework for web-based retrieval, analysis, and visualization of spatially related environmental data based on the integration of distributed data. This architecture is based on web services. The proposal presented in [14][18][20] has the interoperability properties, however, our proposal supports more geographic data formats.

Zongyao and Yichun proposed, in [14], a service-oriented architecture for spatial data integration (SOA-SDI) of a large number of available spatial data sources that are physically sitting at different places, of which the development web-based GIS systems were based on SOA-SDI, allowing client applications to pull in, analyze and present spatial data from those available spatial data sources. Lu, in [18], defined a GIS platform architecture as a multi-layer architecture that integrated the web service, Servlet/JSP functions and GIS APIs based on the framework of J2EE infrastructure. The GIS system can be accessed by many different computers in networks with different kinds of operating systems. It is a distributed, platform independent system architecture. The data are stored and managed with EJB. Frehner and Brandli [20] presented the Virtual Database that consists of a framework for web-based retrieval, analysis, and visualization of spatially related environmental data based on the integration of distributed data. This architecture is based on web services. The proposal presented in [14][18][20] has the interoperability properties, however, our proposal supports more geographic data formats.

Case Study

The development of a public consulting system of academic research built on a GIS (Geographic Information Systems) paradigm, composed of an interface of interactive maps available on the Internet, using geographic databases, servers of interactive maps that generate services on the web and the use of

languages and technologies of the latest generation for the layer of presentation and interaction with users. In Figure 2, we present the initial vision of the system.

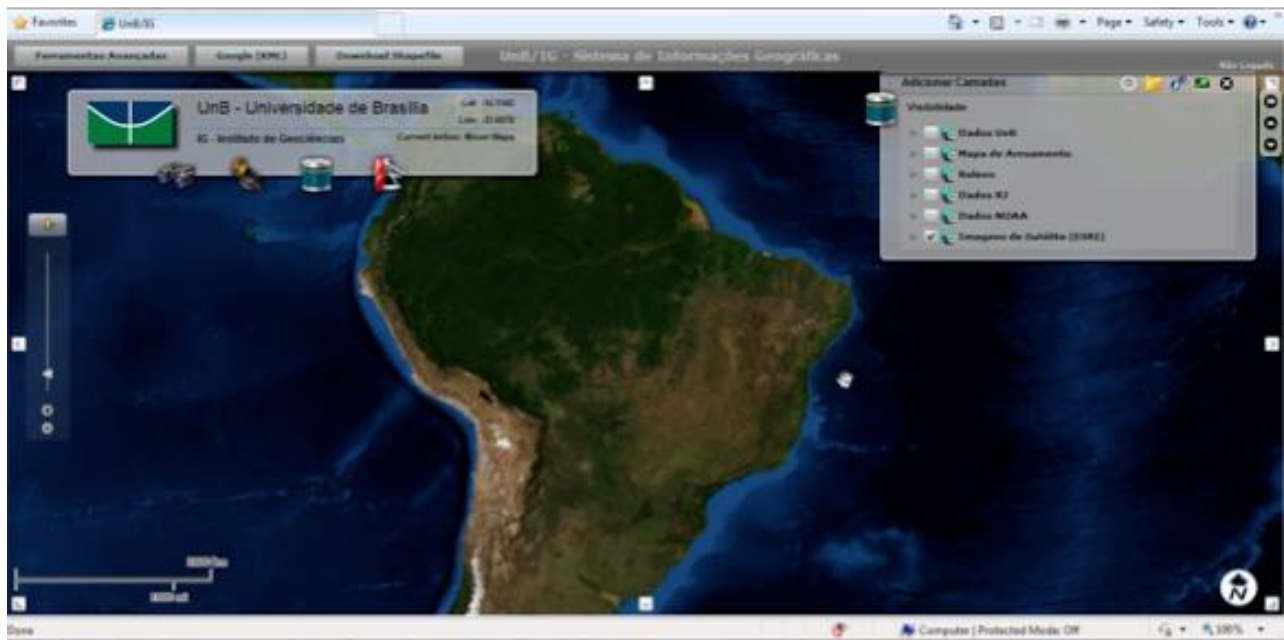


Figure 2. Initial View of the System

Various geographic web services are integrated, such as wind velocity and direction services of the American NOAA, with the rest platform of the ESRI as a mosaic of world images and services of maps from diverse Brazilian institutions. Thus, many services were in standard WMS and WCS, while services in standard REST were integrated guaranteeing then, a good degree of interoperability and sharing.

In Figure 3 we see the geographic features presented with the richest detail when using zoom tools on the map; at this level of zoom, one can see rural properties in salmon tones, as orange highlights the human settlements, and airstrips, train tracks and the main rivers can also be seen at this level. An altimeter base completes the background. The features not used as web services were stored in SGBD PostgreSQL with PostGIS.

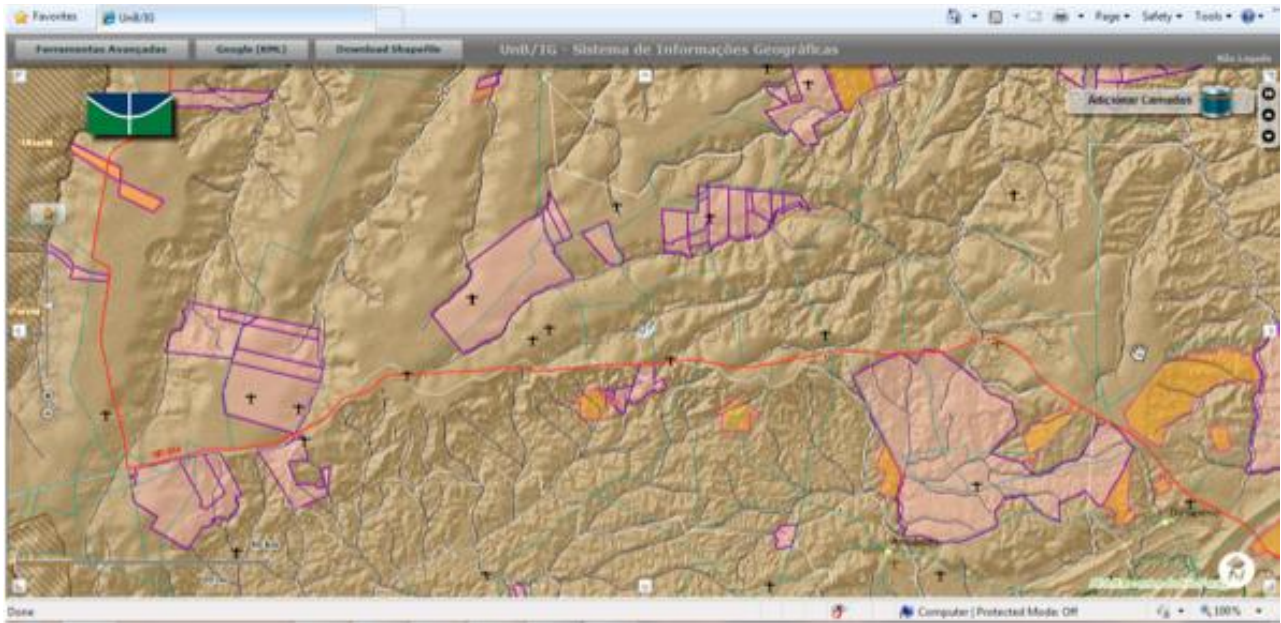


Figure 3. Zoom of detailed information of the geography mounted

The transparency of the maps can be altered and diverse layers of information of the same geographic area can be presented; this is a resource that Flex technology provides, which is useful and has great visual impact. In Figure 4, on selecting the area of the city of Rio de Janeiro we have the system fusing local data with data from web services of other institutions, such as: the Pereira Passos Urban Institute of Rio de Janeiro and the Brazilian Institute of the Environment and Renewable Natural Resources-IBAMA.

In Figure 5 we see the integration with the Google Street View platform. A point of observation was located in front of the Metropolitan Cathedral of the city of Rio de Janeiro; one can see in the upper part of the screen a higher view of the area and in the lower part a 3-D view obtained by the Street View platform of the same region and with the same direction of the arrow pointed.

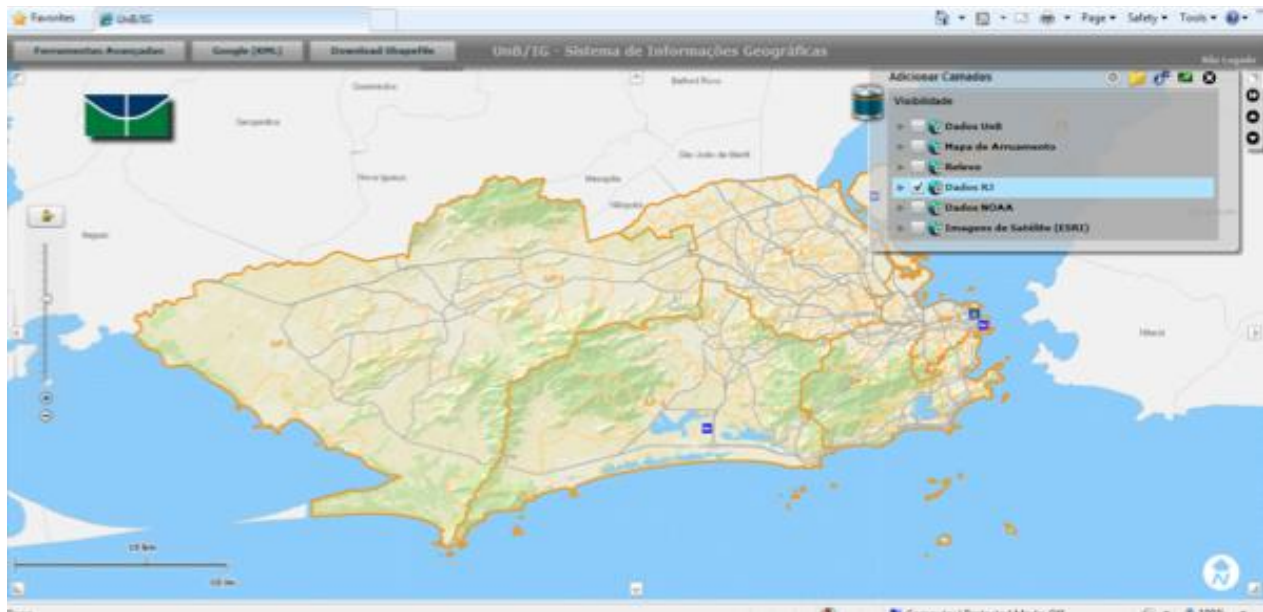


Figure 4. Zoom of the city of Rio de Janeiro

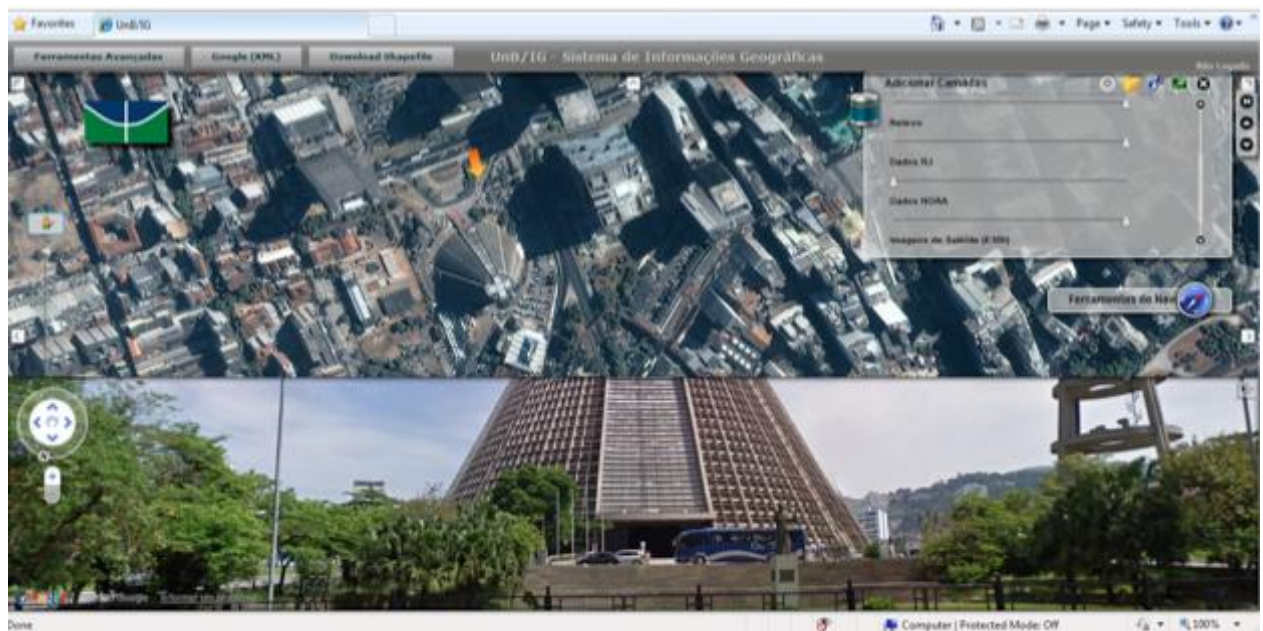


Figure 5. Integration Google Street View

Research tools of academic works were developed, and through these one can find scientific articles or studies completed in the research area.

Tools such as buffer and spatial queries were implemented and integrated; below shows the two operating together, according to data presented in Figure 6.

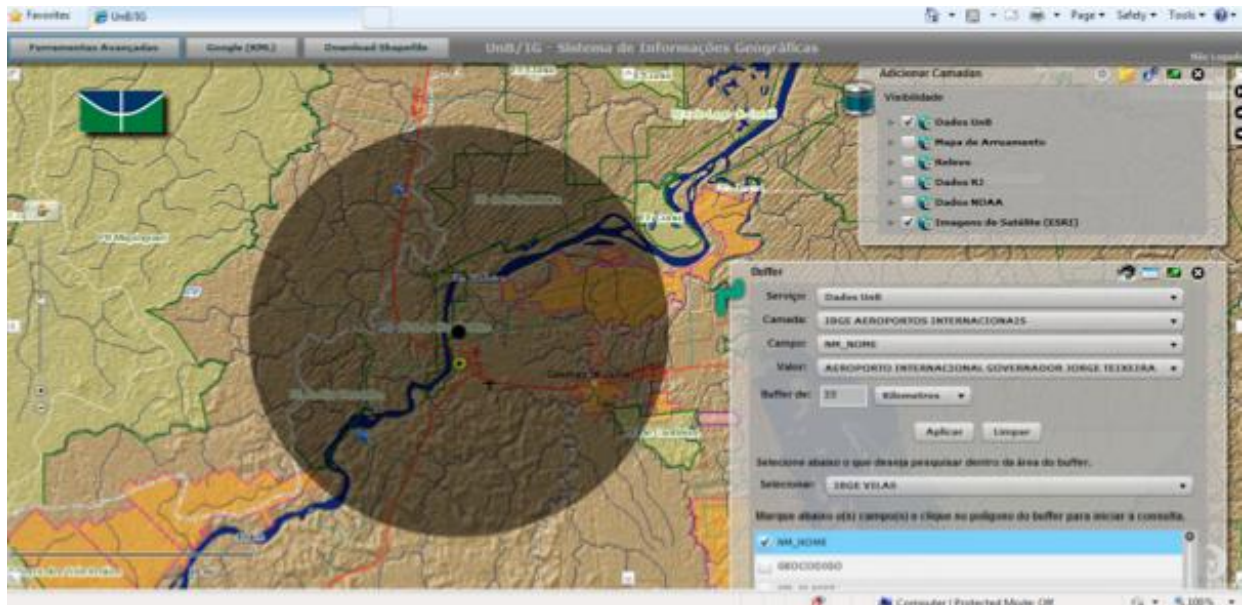


Figure 6. Buffer Tool and Spatial Query

Spatial graphic generating tools permit an evaluation of areas excessively inventoried for a determined resource or the identification of areas in need of particular studies, or identification of the needy areas of the given study, as presented in Figure 7.

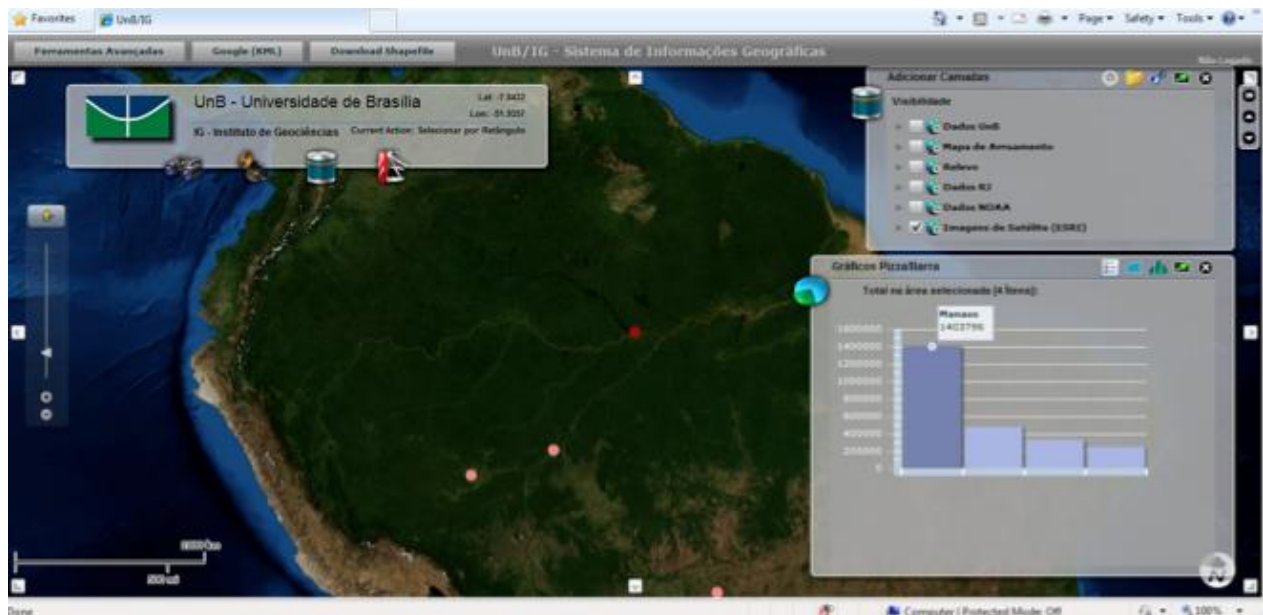


Figure 7: Spatial consultancy tools for generating graphics

Conclusion

The architecture presented in this paper proposes a tool of rapid implantation and availability of geographic data through the web, with a set of services made available, which can easily integrate data of structured systems such as, consumption of information originating from diverse data sources.

The architecture proposed responded well to the system of application, much as the same being used for the development of other webGIS. Recently IBAMA adopted the architecture proposed in this work in the implementation of webGIS for the monitoring of its field supervision operations; through the set of components available, the information of operations and navigation of airships and roadways, always in a geo-referenced way are presented. Similarly, the effect of agents or the quantity of apprehension and automations are informed through structured systems and presented in a spatial way on the platform.

The next step is to implement the proposal architecture independent of ESRI API.

References

- [1] Boucelma, O., Essid, M. 2002. *A WFS-Based Mediation System for GIS Interoperability*. ACM GIS'02, November 8–9, 2002, McLean, 23-28. . DOI= <http://dx.doi.org/10.1145/585147.585153>
- [2] Arenas, J., Zambrano, H.2009. Web-based GIS Applications for Government. In *Proceedings of the 3rd ICEGOV International Conference on Theory and practice of electronic governance*. (Bogota, Colombia).ACM . DOI= <http://dx.doi.gov/10.1145/1693042.1693125>.
- [3] Ostergren, M., Hemsley, J., Belarde-Lewis, M., Walker, S.. 2011. *A Vision for Information Visualization in Information Science*. iConference, Seattle, USA fev. (2011).531-537. DOI=<http://dx.doi.org/10.1145/1940761.1940834>.
- [4] Bressan,T.. 2010. *Desenvolvimento e integração de um ambiente SIGWEB com ferramentas de software livre*. Master Thesis. Federal University of Santa Maria Brazil.
- [5] Câmara, G., Queiroz, G. 2010. *Banco de Dados Geográficos*. 2010
- [6] Kim, D.; Kim, M. 2002. Web GIS Service Component Based On Open Environment. In *Proceedings of IGARSS Geoscience and Remote Sensing Symposium. 2002 IEEE International IEEE*. pg. 3346-3348. DOI= <http://dx.doi.org/10.1109/IGARSS.2002.1027178>
- [7] OGC 2007. *OpenGIS® Geography Markup Language (GML) Encoding Standard 2007*.
- [8] Dragičević, S.; Balram, S. A Web GIS collaborative framework to structure and manage distributed planning processes. *Journal of Geographical Systems*. Springer-Verlag (2004) 6: 133-153. DOI= <http://dx.doi.org/10.1007/s10109-004-0130-7>
- [9] Rhyne, M. Visualizing Geospatial Data. 2004. In *Proceedings of ACM SIGGRAPH 2004*. DOI= <http://dx.doi.org/10.1145/1103900.1103931>
- [10] Majchrzak, A.; More, P.. Emergency! Web. 2.0 the Rescue! . *Communications of the ACM*, April 2011, vol. 54, n. 4. Pg. 125-132.
- [11] Longley, A., Goodchild, F., Maguire, J. , Rhind, J. 2005. *Geographical Information Systems and Science*. 2nd Edition. John Wiley & Sons.
- [12] Rigaux, P., Scholl, M.,2002. Voisard, A. *Spatial Databases with Application to GIS*. Elsevier Science.
- [13] Lbath, A., Pinet, F..2000. The Development and Customization of Gis-Based Applications and web-based GIS Applications with the CASE Tool Aigle. In *Proceedings of the 8th ACM international symposium on Advances in geographic information systems*, Washington, USA.pg.194-196.DOI= <http://dx.doi.org/10.1145/355274.355307>

- [14] Zongyao, S., Yichun, X..2010. Design of Service-Oriented Architecture for Spatial Data Integration and Its Application in Building Web-based GIS Systems. *Geo-spatial Information Science* . 13, 1 (March 2010), 8-15. DOI= <http://dx.doi.org/10.1007/s11806-010-0163-7>
- [15] Fu, P., Sun, J. 2010. *Web GIS: Principles and Applications*. ESRI Press (2010).
- [16] Wolfgang, R. Principles and Application of Geographic Information Systems and Internet/Intranet Technology. In Proceedings *New Information Processing Techniques for Military Systems*. Istanbul, Turkey, October 2000.
- [17] Baumann, J. 2011. Future of Web GIS: An Interview with Pinde Fu. *GeoConnection International Magazine*, April 2011
- [18] Lu, X..2005. An Investigation on Service-Oriented Architecture for Constructing Distributed Web GIS Application. In *Proceedings of IEEE International Conference on Services Computing (SCC'05)*. 191-197. DOI=<http://dx.doi.org/10.1109/SCC.2005.27>
- [19] Shunfu H.. Web-Based Multimedia GIS for the analysis and visualization of spatial environmental database. In Proceedings of *Symposium on Geospatial Theory, Processing and Applications*, Ottawa 2002.
- [20] Philippe Tigaux, Michel O. Scholl, Agn s Voisard. Spatial databases: with application to GIS. Editora Morgan Kaufman. 2002
- [21] Frehner, M., Brandli, Martin. 2006 Virtual database: Spatial analysis in a Web-based data management system for distributed ecological data. *Environmental Modelling & Software* 21 (2006) pg. - 1544-1554. DOI=<http://dx.doi.org/10.1016/j.envsoft.2006.05.012>
- [22] Page, K., Roure, D., Martinez, K. 2011. *REST and Linked Data: a match made for domain driven development?* In: Proceedings of the Second International Workshop on RESTful WS-REST 2011 March 2011; Hyderabad, India. DOI=<http://dx.doi.org/10.1145/1967428.1967435>.

CAPÍTULO 3-

XGIS Flex: A Free and Open Source Framework for Development of the Geographic Information Systems on the Web

[Artigo submetido para a revista Journal of Brazilian Computer Society]

Abstract - Efforts to combine Geographic Information Systems with World Wide Web (WebGIS) are increasing to attend and facilitate different applications. This paper presents a framework of a new, free and open source WebGIS software package. The main characteristic of this software is the interoperability between different sources of heterogeneous raster, vector and tabular data. The visualization of maps and the capability to input spatial data produced in different formats into the system through the different components implemented with the support of the Web 2.0 concept is another important characteristics of the system (XGIS). Two study cases are presented in this paper to validate the proposed framework. In the first case, the system was implemented in the Secretariat of Planning and Modernization of Public Management of State of Tocantins (SEPLAN-TO) and was named Monitoring System of the Ecological Corridor of the Jalapão Region. In second case, the WebGIS was implemented in the Brazilian Institute of the Environment and Renewable Natural Resources (IBAMA). The focus here was the monitoring of deforestation and embargoed areas in Brazil.

3.1 Introdução ao artigo submetido à revista Journal of Brazilian Computer Society

Neste capítulo, é apresentado o artigo submetido à revista Journal of Brazilian Computer Society, que por sua vez demonstra a versão atual do *framework* desenvolvido. O mesmo é validado por meio de dois estudos de caso, em um deles a implantação de um SIG para a Secretaria de Planejamento e da Modernização da Gestão Pública do estado do Tocantins com apoio da JICA - Japan International Cooperation Agency e, em outro estudo com a implantação da *framework* e a troca por parte do Instituto Brasileiro do Meio Ambiente e dos Recursos Naturais Renováveis (IBAMA) do ambiente similar desenvolvido em Flex da fabricante ESRI pela arquitetura e *framework* apresentados neste capítulo.

O *framework* para desenvolvimento de SIGs para web é de rápida e fácil implantação, além de ser livre, com conceitos da Web 2.0 e da OGC, trata-se de uma aplicação RIA. Uma nova aplicação derivada do software desenvolvido não necessita de técnicos programadores de computadores no processo de customização, sendo que usuários comuns podem realizar os ajustes por meio de arquivos de formato XML. Trechos de exemplo de códigos-fonte em formato XML são apresentados neste artigo.

Outro ponto interessante da ferramenta desenvolvida é a simplificação do modelo multi-camadas praticado na implantação de SIGs para web. A arquitetura atual proposta conta com três camadas: SGBDs, Servidores de Aplicação e de Interoperabilidade, o que facilita a instalações do ambiente. Outra vantagem do apresentado está no fato do *framework* ser de código compilado, mais seguro, e de utilizar amplamente a capacidade de processamento local da máquina cliente, tornando mais baixos os custos de instalação do lado servidor.

XGIS Flex: A Free and Open Source Framework for Development of the Geographic Information Systems on the Web

Mariano F. Pascual ^{a,*}, Maristela Holanda ^b, George F. Sand ^a, Edson E. Sano ^{a,c}

^a Universidade de Brasília, Instituto de Geociências, Campus Universitário Darcy Ribeiro CEP: 70910-970 Brasília, DF, Brazil

E-mails: mariano.pascual@ibama.gov.br, georgesand@unb.br

^b Maristela Terto de Holanda

Universidade de Brasília, Departamento de Ciência da Computação, Campus Darcy Ribeiro 70910-970 Brasília, DF – Brazil

E-mail: mholanda@cic.unb.br

^c Edson Eyji Sano

Embrapa Cerrados, BR-020 km 18, Planaltina, DF – Brazil

E-mail: edson.sano@embrapa.br

* Corresponding author

Abstract Efforts to combine Geographic Information Systems with World Wide Web (WebGIS) are increasing to attend and facilitate different applications. This paper presents a framework of a new, free and open source WebGIS software package. The main characteristic of this software is the interoperability between different sources of heterogeneous raster, vector and tabular data. The visualization of maps and the capability to input spatial data produced in different formats into the system through the different components implemented with the support of the Web 2.0 concept is another important characteristics of the system (XGIS). Two study cases are presented in this paper to validate the proposed framework. In the first case, the system was implemented in the Secretariat of Planning and Modernization of Public Management of State of Tocantins (SEPLAN-TO) and was named Monitoring System of the Ecological Corridor of the Jalapão Region. In second case, the

WebGIS was implemented in the Brazilian Institute of the Environment and Renewable Natural Resources (IBAMA). The focus here was the monitoring of deforestation and embargoed areas in Brazil.

Keywords WebGIS, Web 2.0, rich internet application, framework.

1 Introduction

A Geographic Information System (GIS) can be defined as the combination of a database management system, a set of operations for exploring data and a graphic display system that are used for geospatial analysis. GIS analyses have the main purpose to support decision making processes and to model some of the possible consequences of these decisions [1-5]. GIS can also be considered as an important geographic tool that facilitates integration of spatially-based data (maps) with non-spatial attribute data, for instance, to study impacts in the environment interactively [3] [5-9]. Ultimately, GIS has the capability of solving complex geographical problems and of deriving new and important information by integrating several existing layers.

Combining GIS with World Wide Web (WebGIS) often results in systems that simplify exchange of geographical data, provide structured information and empower users to access GIS applications without any specific software package [10]. However, a major challenge is the interoperability among heterogeneous databases [11]. The Open Geospatial Consortium (OGC) proposes an open service architecture of web-based GIS to support data-interoperability. It also suggests the use of Geographic Markup Language (GML) based on Extensible Markup Language (XML) to exchange data between web clients and WebGIS [12, 13]. The REST technology [14] is also used to support interoperability of geographical databases. For the visualization of maps in an interactive way, the Web 2.0 technology has been applied through different components of Rich Internet Application (RIA). As noted by [15], this technology has been applied for the development of WebGIS. Web mapping applications such as Google Maps™, Google Earth™, Microsoft Bing Maps™ and Yahoo Maps™ are usually considered good examples of Web 2.0 [11].

In this environment, the free and open source software (FOSS) community has developed solutions for GIS implementation, database management systems with free spatial extension and high performing map servers. One of the issues that facilitated the distribution and use of these free tools is the standards defined for interoperability between data and the applications used for the development of a GIS [16, 17].

The objective of this paper is to present the XGIS Flex, a framework to develop WebGIS with free and open source software, with interoperability between different sources of heterogeneous data, as well as the visualization of maps in different formats whose components are implemented with a Web 2.0 concept.

2 Geographic Information System on the web

GIS on the web refers to any GIS that uses web technologies. The simplest form of WebGIS has at least a server (web application server) and a client (a web browser, a desktop application or a mobile application) [11, 18]. The architecture of a WebGIS is most commonly based on the use of three layers: user interface layer, application server layer and database layer [19-21]. However, some authors consider four layers, where the integration layer is added on the architecture of WebGIS, which is based on web services [22].

The user interface layer serves as a graphic user interface (GUI) to present the results of spatial data, allowing the end users to interact with the backend services. The application server layer communicates with multiple data sources via data integration layer and interacts with end users to analyze and manipulate data coming from data provider services. The database layer of data provider services is a set of remote data provider services for data sharing. Each data provider service offers a set of interfaces in which client applications can input remote data or manipulate the data.

3. XGIS Flex framework

The XGIS framework was developed to be a free and open source option to the platforms developed in Flex. The XGIS enables navigators to take advantage of RIA and Web 2.0 environments. It also interacts with OGC standard web services, such as WMS, WFS, WFS-T, WCS and REST, as well as files such as GPX, KML, SHP and other formats including JSON, GeoJSON and GeoRSS. The XGIS is fully linked and integrated with the Map Server Geoserver (Java), which is a high performance interactive map server [23] and presents interoperability with open source and multiple connectors sources of data such as PostGIS, Oracle, SQL Server, DB2, SDE, shapefiles, raster formats and others. This framework allows the visualization of data coming from other map servers, such as ArcGIS Server or MapServer and fused services, such as Microsoft Bing, OpenStreet Maps (OSM), Yahoo Maps and others.

3.1 Components of XGIS Flex framework

The XGIS framework is composed of components developed based on the the architecture presented by [24]. Figure 1 presents the main components of the XGIS Flex framework.

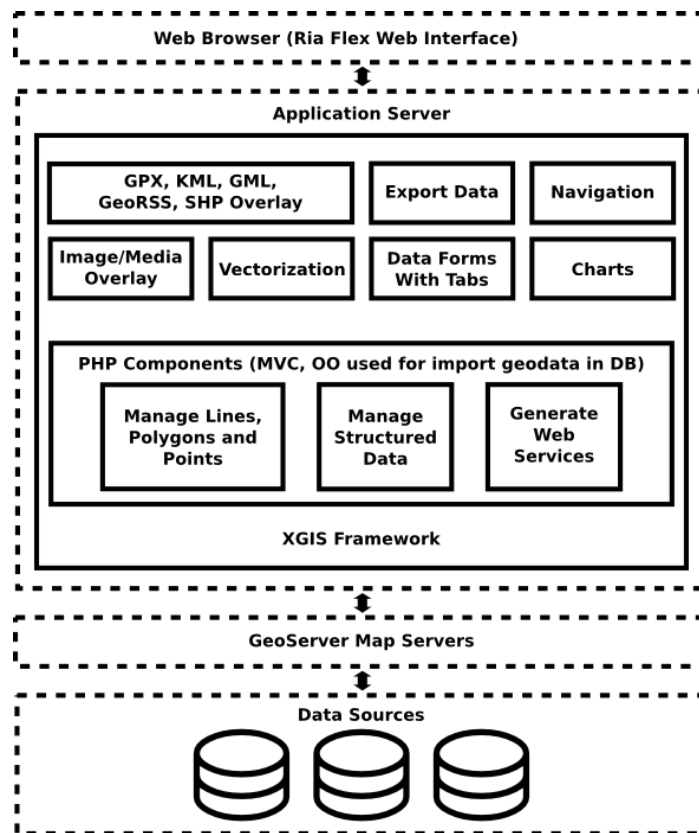


Fig. 1 Components of XGIS Flex architecture

The GPX, KML, GML, GeoRSS and shapefile overlay component enables the opening of shapefiles and their attributes, providing the overlay of geometries available in shp format files in the web Flex environment. Attributes in dbf format files are presented in a tabular format and related to the correspondent geometry. The features that can be viewed are: line, point or polygon. In case the set of files is projected in a system distinct to the map base, the inclusion of the compacted file format prj is necessary for the system to complete re-projection. This component reaches a number of users who process GPS receiver data and, therefore, was a great motivator in the development of this component, which makes the overlay of files downloaded directly from GPS receivers possible. All waypoints

available to track overlays of a line where the initial point, path and the final point are presented in different colors and the textual data are showed in a floating table. The same logics of overlay is also applied for KML format files.

The vectorization component is used for the digitizing task in the computer screen and for further record in distinct database formats (Oracle Spatial, PostGIS, SQL Server, among others). It is also possible to draw, export for local file or record directly into database as point, line or polygons. The format selected to local Record was KML. Algorithms for the calculation of the area and perimeter are also made available in the class. During the digitizing process, it is possible to add or edit new vertices and exclude former ones or all polygons, lines or points already drawn. It is also possible to add labels to the created features.

The Exporting Data Component is totally integrated with Geoserver Java MapServer. Through this component, we can also select and then export downloaded layers or part of layers in several formats such as shp, csv, pdf, xls, kml, kmz, jpg and png, in distinct systems of projection. The reprojections are always done on-the-fly through the system selected by the user of application during the conversion.

The Media Overlay is the component responsible for overlaying videos, photos and documents over maps, representing a strong Web 2.0 concept. For the development of this component, it was necessary to map and process the types of media data available in the main commercial Database Management Systems (DBMS) so that the procedures related to query and overlaying maps become possible. The written MVC PHP can retrieve, from the selected DBMS and with the use of web services, all binary files (videos, photos, text files, among others) related to geographical features selected in the computer screen, regardless of the format (point, line or polygon). In this component, we added a key parameter of access in order to avoid intercepts or undesired accesses of media related to available features. This key is hidid to users within the compiled code of Flex framework, therefore, is not possible to be accessed by web users.

The Geographic Data Treatment Component aims to adopt the tool of a set of classes capable of processing incoming information from the interface, which will be sent to the database. With this tool, it is possible to select the type of database that will be used and the classes that will be the interactions necessary for a correct treatment of distinct types between the manufacturers of DBMS. Treatment of geographic features is a set with the minimum rules necessary to avoid classical errors during the digitizing process, such as the creation of polygonal ties. Part of code of a class developed and named TPDOConnection.class.php, which is responsible for the conections to distinct comercial DBMS is

presented in Annex A. It receives the parameters of connections and separates and considers particularities of each type of connection.

Annex B presents two parts of source code of saveWayPoints.php class. This is also part of set of codes for processing geographical data. This web service is responsible for particularities of points and lines in the PostGIS extension of the PostGRES database. The class receives the vector-based geometries, processes and records in the DBMS, returning the status of processing in the way of messages to the client users who initiated the processing.

The component to generate dynamic graphics allows the construction of statistical graphs through the geographical selections. The query can be constructed by clicking the computer's mouse in geographical objects that we desire to generate a query or by generating a polygon in an ad-hoc consultation, with single casual access and data processing, according to parameters not used yet, which, in turn, are run iteratively and heuristically. Figure 2 shows this component, highlighting the tools available to select information, a polygon generated randomly and a grid with tabular data (result of this processing step). Figure 3 presents the pie graph derived from the above mentioned selection. The following types of graphics can be derived by this component: lines, columns, bars, pie, candlestick, areas and bubbles.

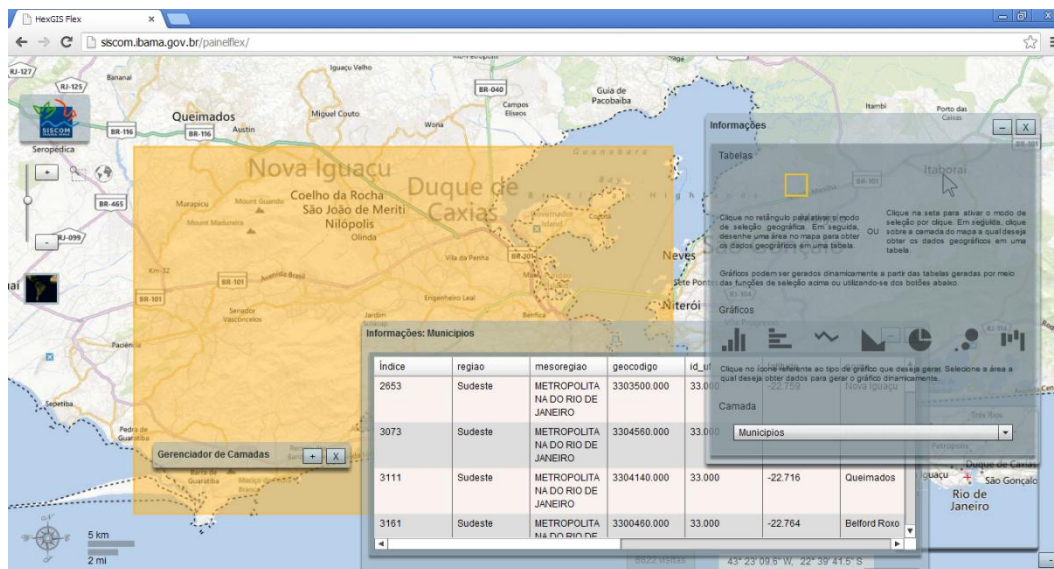


Fig. 2 Component of XGIS Flex to generate dynamic graphs

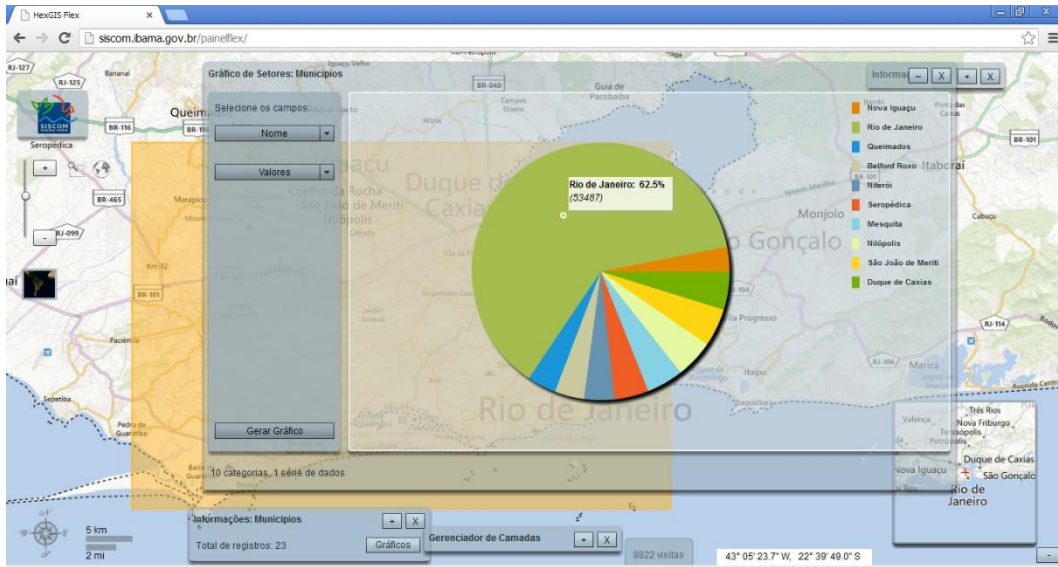


Fig. 3 Example of graphics derived by the component to generate dynamic graphs

The Navigation and Data Tabs Component refers to the presentation component. The formatted grids are built to improve the visual aspects of register lists extracted from the database. There is a frequent interaction between the navigation and query of attributes related to the geometry visualized. The framework is composed by two basic components: the Add Points Component, in which it is possible to add points over maps, as well as the numerical or text attributes of this points. The Add Services allow the addition of web services with OGC, Web Map Services, Web Feature Services and Web Map Tile Services patterns, always on-the-fly.

3.2 XGIS to develop WebGIS

The XGIS framework was designed to be user friendly. If the user of the XGIS is not a software developer, he or she will still be able to customize an application easily and quickly, needing only to edit XML extension files. With the configuration files in XML, one can define which map services can be used, in which tables it will be possible to edit data, titles and subtitles of the system, logotypes or brands, data subtitle, symbols, and the individual configuration of each component developed.

Annex C lists a piece of the code of the XML file of the configuration of layers to be shown on the spatial interface with tags already configured. Besides being possible to quickly implement an interface of interactive maps, another feature of the framework is the engine of web service for the interaction

between the web forms projected in the Flex environment and different types of databases. The engine was built in PHP language and deals connections with the following DBMS: MySQL, PostgreSQL, SQLite, Oracle and SQL Server and its spatial extensions, if they exist. Thus, it is possible to have an easy programming language for developing new components that interact with textual and spatial data.

The layer of data presentation always exhibits a standardized layout, making use of the application easier. This characteristic is possible because the components that were developed in Flex using ActionScript (presentation) and in PHP follow the MVC—Model, View and Control model. Developers have only to design the form using a graphic environment and make it available to the web service corresponding to the database tables he or she wishes to interact by using and extending the set of codes developed. It is independent of DBMS that users are utilizing, it is just necessary to modify the data that belongs to the connection, such as user, password, IP address and type of management system to be connected.

3.3 Implementation of the XGIS framework

For the development of the XGIS components, some free and open source libraries were used. The SDK Flex library [25] was one of them. This technology, have available a set of components including buttons, list boxes, tree-views, data grids, objects of text control, layout containers, graphic components, animations, status applications, modal dialogue boxes and others. The openscales libraries [26] were also widely used and an extension of the majority of the classes of the library, as well as the creation of new components and classes. The algorithm of reading of Tile Map Services derived from this library.

Other sources and free components written in ActionScript were used and organized within the XGIS framework, such as the file reading components of extensions shp, shx and dbfs and, of the watermark insertion in the application [27]. The PHP components have been completely written and this source manages the entrance of vector data that are sent by web interface such as lines, point, polygons and projection systems (input/output). Textual data are also controlled, making not only the presentation of information over maps easier, but also the insertion, alteration, exclusion and consultation of the same directly from the database.

4 Related works

Different tools for assisting the development of WebGIS with free and open source software are found in the literature and there are proprietary tools with closed sources. Some of these tools are presented as following. The ESRI makes an API for Flex [28] available for developing WebGIS with Web 2.0 characteristics, however, it is a proprietary closed source framework. A negative point is the strong linkage existing between the ESRI framework and map services originating from ArcGIS Server servers, also proprietary and costly to implement.

Google has available an environment for development in Flex, Google Maps API for Flex [29], however, it is also proprietary. The great advantage of this environment is the popularity of its base maps, which have excellent quality since Google invests heavily in the acquisition of cartographic bases, and the service provides very high performance as well. The negative points are the low quantity of available functions, presenting itself more as a compiled library to be incorporated to another Flex application and its proprietary source unalterable.

The I3Geo [30] is a web software based on a set of other free software, mainly MapServer. The main focus is the availability of geographic data and a set of tools for navigation, analysis management, on demand map sharing, and management. It is strongly linked to MapServer, free standard web services management software OGC, but from the first generation not high performing nor created for editing geographic data via web, as is Geoserver.

Four libraries are considered free frameworks for WebGIS development written in JavaScript: OpenLayers [31], GeoExt [32], OpenScales [26] and MapFish [33]. OpenLayers is a JavaScript library accessed as API, however, with an open source and one that currently presents as a library used mainly for the support and inclusion of maps on web pages, this is because of its versatility, able to adapt to diverse languages and modern web browsers. Another advantage is in the capacity of mash-ups between sources such as Google Maps, MsBingMaps, Yahoo Maps, OSM and others.

GeoExt presents itself as a JavaScript Toolkit for Rich Web Mapping Applications that is basically an OpenLayers library, but with resources that raise the level of the applications developed, making them closer to a desktop application, while still in a web environment. Openscales is a framework written in ActionScript 3 with LGPL license type. Their libraries are widely used in our solution, but are limited to support the navigation maps.

The classes used in the framework presented in this paper have been extended, its engine optimized and were created lots of additional components. MapFish is a framework to be developed from the web applications written in Python. These new classes present functionality for the construction of

applications of the type web mapping. MapFish making available a toolbox Java Script composed of Openlayers, GeoExt and ExtJS.

Differently from the libraries listed above, the XGIS is a full framework for developing WebGIS since it interacts by manipulating textual and spatial data from different DBMS, besides the possibility to render maps and pictures and to interact, as a tool Web 2.0 RIA, with photos, videos, spatial data and documents. Ultimately, the main idea of XGIS was the possibility to generate high performance applications of GIS in the web environment, easily integrated and independent of requirements of programming knowledge to implement this type of solution, always with good visual presentation.

5 Case studies

The framework was recently tested in the implementation of two WebGIS cases in the federal and state governments of Brazil. The first case was implemented in the Secretariat of Planning and Modernization of Public Management of Tocantins State (SEPLAN/TO), with the support from the International Cooperation Agency of Japan (JICA). The system was named Monitoring System of the Ecological Corridor of the Jalapão Region. The second study case was implemented in the Brazilian Institute for Environment and Renewable Natural Resources (IBAMA), and the main subject was the implementation of a new map interface of SISCOM (shared system of IBAMA, responsible, for example, for the availability of environmental information and embargoed areas).

Specifically in the case of the application of the framework of Tocantins, the set of components facilitated the integration of data from different sources. The main sources of spatial data available in Tocantins were maps in shape format, satellite images in TIF and geographical data in Oracle database with spatial extensions. A spatial database was then created using already validated dataset using PostgreSQL with spatial PostGIS software. The entire application was customized and implemented in a single day, including the creation of web map services using distinct sources of data and Geoserver. The appointments within the application are indicated using the XML extension file. Other files from the same extension were also configured, allowing changes in logotypes, brand names, title, and subtitle of the application, addresses of services and dynamic captions, among others.

Figure 4 shows two temporary screens obtained from the navigation of the application implemented in the Tocantins State. In this figure, it is possible to visualize the WebGIS with vector data only and some of their listed layers and dynamically loaded by the Geoserver server. The Navigations and Data

Tabs, Layers and Menus components are being instanced together with the central engine of map navigation.

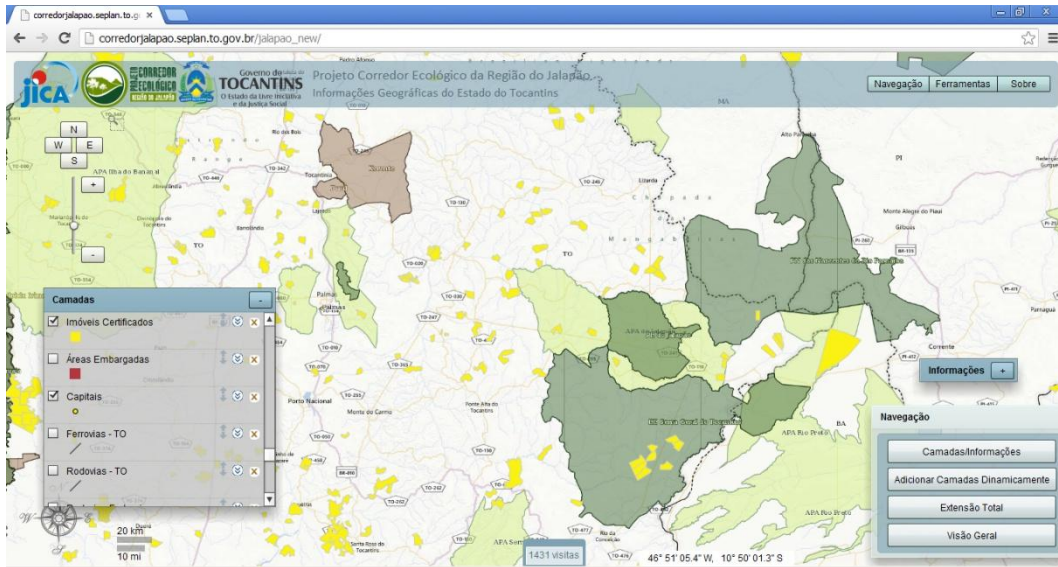


Fig. 4 WebGIS project implemented in the Tocantins State

Raster data (basically, images from the ALOS/AVNIR satellite and images from the Microsoft Bing catalogue) was overlaid with vector data. The central engine executed functions such as GetFeatureInfo and GetLegendGraphic for retrieving data regarding the layers selected. The result of the queries is always a grid when the result obtained is greater or equal to two registers.

In the IBAMA case study, the developed application supported country-based dataset. The tools for generating graphics were activated and configured to adapt the application to support system for making decisions related to deforestation and embargoed areas. Figure 5 shows a screen of the system implemented in the Center for Remote Sensing of the institute. The screen refers to a query involving display of photos and videos. In this query, the components Navigation and Data Tabs, Treatment of Geographic DataBase, “Charts”, Layers and Media Overlay components were activated in the navigation engine.

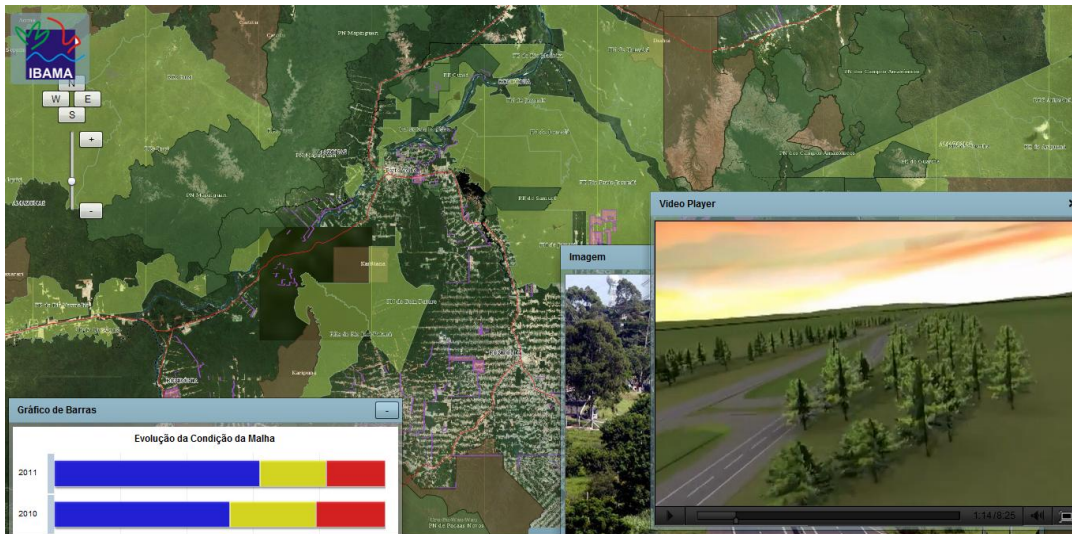


Fig. 5 WebGIS project implemented in IBAMA, showing a example of query involving display of video and photos

6. Conclusions

Architecture presented in this paper proposed a tool of rapid implementation and availability of WebGIS, with a set of available services which can easily integrate data of structured systems, such as consumption of information originated from varying data sources. Text and vector data can be easily manipulated, making not only queries possible, but also the insertion, alteration and deletion of information directly in different types of commercial DBMS.

The display of different media (videos, photos, documents and tables) derived from spatial databases was one of the examples of Web 2.0 architecture functioning that can impress users, thanks to its high performance.

Future research includes the development and integration of 3-D environment, to be written using SDK Flex and OpenGIS and Framework map environment, allowing integration with mosaics and 360-degree panoramic photos obtained, for example, by the Gigapan robots. Tests involving 3-D data from laser profiles, over the Brasilia city, will be addressed shortly.

References

- [1] Reinhardt W (2000) Principles and application of geographic information systems and internet/intranet technology. In: Proceedings of the RTO 1st Symposium on New Information Processing Techniques for Military Systems. Istanbul
- [2] Boucelma O, Essid M, Lacroix Z (2002) A WFS-based mediation system for GIS interoperability. In: Proceedings of the 10th ACM International Symposium on Advances in Geographic Information System (GIS'02), McLean, pp. 23-28
- [3] Rigaux P, Scholl M, Voisard, A. (2002) Spatial Databases with Application to GIS. Elsevier
- [4] Dragičević S, Balram S (2004) A Web GIS collaborative framework to structure and manage distributed planning processes. Journal of Geographical Systems, 6, 133-153
- [5] Arenas J, Zambrano, H (2009) Web-based GIS applications for government. In: Proceedings of the 3rd ICEGOV International Conference on Theory and Practice of Electronic Governance, Bogota
- [6] Rhyne M (2004) Visualizing geospatial data. In: Proceedings of ACM SIGGRAPH GRAPH International Conference on Computer Graphics and Interactive Techniques 2004, New York
- [7] Longley P A, Goodchild M F, Maguire D J, Rhind D W (2005) Geographical Information Systems and Science. 2nd ed. John Wiley & Sons, 512 p.
- [8] Ostergren M, Hemsley J, Belarde-Lewis M, Walker S (2011) A vision for information visualization in information science. In: Proceedings of iConference, Seattle, pp. 531-537
- [9] Olivera H, Holanda M (2012) A GIS Web with integration of sheet and soil databases of the Brazilian Cerrado. 2012. In: Proceedings of the 7^a Conferência Ibérica de Sistemas e Tecnologias de Informação (CISTI), Madri, pp. 735-740
- [10] Pessina V, Meroni, F (2009) A WebGis tool for seismic hazard scenarios and risk analysis, Soil Dynamics and Earthquake Engineering, 29, 1274–1281
- [11] Fu P, Sun J (2010). Web GIS: Principles and Applications. ESRI Press.
- [12] Kim D, Kim M (2002) Web GIS service component based on open environment. In: Proceedings of Geoscience and Remote Sensing Symposium (IGARSS 02), IEEE, pp. 3346-3348
- [13] OGC (2007) OpenGIS® Geography Markup Language (GML) Encoding Standard. Open Geospatial Consortium, OGC 07-036, 437 p.

- [14] Page K, Roure D, Martinez K (2011) REST and linked data: a match made for domain driven development? In: Proceedings of the Second International Workshop on RESTful WS-REST; Hyderabad
- [15] Majchrzak A, More P (2011) Emergency! Web. 2.0 the Rescue! Communications of the ACM, 54(4), 125-132
- [16] Câmara G, Vinhas L, Souza C M R (2012) Free and open source GIS: will there ever be a geolinux? In: Erwan B, Markus N (Eds), Geospatial Free and Open Source Software in the 21st Century. Springer Berlin Heidelberg, Lecture Notes in Geoinformation and Cartography, pp. 229-245
- [17] Steiniger S, Hunter A (2012) Free and Open Source GIS Software for Building a Spatial Data Infrastructure. Springer
- [18] Bressan T (2010). Desenvolvimento e integração de um ambiente SIGWEB com ferramentas de software livre. [MSc. thesis]. Federal University of Santa Maria, Brazil
- [19] Frehner M, Brandli M (2006) Virtual database: spatial analysis in a web-based data management system for distributed ecological data. Environmental Modelling & Software, 21, 1544-1554
- [20] Shunfu H (2002) Web-based multimedia GIS for the analysis and visualization of spatial environmental database. In: Proceedings of the 2002 Symposium on Geospatial Theory, Processing and Applications, Ottawa
- [21] Baumann J (2011) Future of Web GIS: an interview with Pinde Fu. GeoConnection International Magazine, April
- [22] Zongyao S, Yichun X (2010) Design of service-oriented architecture for spatial data integration and its application in building web-based GIS systems. Geo-spatial Information Science, 13(1), 8-15
- [23] Rao S, Sri Vinay (2010) Choosing the right GIS framework for an informed enterprise Web GIS solution. In: Proceedings of the 13th Annual International Conference and Exhibition on Geospatial Information technology and Applications, India, pp. 19 -21
- [24] Pascual M F, Alves E, França G S, Roig, H L R, Almeida, T, Holanda M (2012) An architecture for geographic information systems on the web - WebGIS. In: Proceedings of the Fourth International Conference on Advanced Geographic Information Systems, Applications and Services, Valencia, pp. 209-214

- [25] Adobe SDK Flex (2012) [cited March 2013]. <http://www.adobe.com/devnet/flex/flex-sdk-download-all.html>
- [26] Openscales (2012) Rich maps for your applications [cited March 2013] <http://openscales.org/>
- [27] Vanrijskom (2012) FAR (FlashArchive) [cited February 2013] <http://code.google.com/p/vanrijskom-flashlibs/>
- [28] ESRI (2012) ArcGIS API for Flex [cited March 2013] <http://help.arcgis.com/en/webapi/flex/>
- [29] Google (2012) Google Maps API for Flash [cited March 2013] <https://developers.google.com/maps/documentation/flash/>
- [30] PSPB (2012) Portal do Software Público Brasileiro. I3GEO [cited March 2013] http://www.softwarepublico.gov.br/ver-comunidade?community_id=1444332
- [31] OSGeo (2012) OpenLayers: free maps for the web [cited March 2013] <http://openlayers.org/>
- [32] GeoExt (2012) JavaScript toolkit for rich web mapping applications [cited February 2013] <http://geoext.org/>
- [32] OSGeo (2012) Mapfish [cited March 2013] <http://mapfish.org/>

CAPÍTULO 4-

Considerações Finais

A arquitetura e *softwares* apresentados neste projeto propõem uma ferramenta de rápida implementação de Sistemas de Informações Geográficas para web, com um conjunto de serviços disponibilizados, que podem facilmente integrar dados de sistemas estruturados, com o consumo de informações provenientes de diversas fontes de dados. Dados textuais, vetoriais e matriciais podem ser facilmente manipulados, fazendo não apenas consultas possíveis, mas também a inserção, alteração e exclusão de informações diretamente em diferentes tipos de Sistemas Gerenciadores de Bancos de Dados.

A visualização de diferentes tipos de mídias indexadas espacialmente sobre os mapas, tais como vídeos, fotografias, documentos e tabelas provenientes de bancos de dados mostrou-se como um dos exemplos de conceitos Web 2.0 em funcionamento na arquitetura. Todas essas integrações foram possíveis através do motor de serviços web construído e disponibilizado no pacote de softwares do *framework*.

Espera-se que a arquitetura proposta auxilie e popularize a implantação de SIGs web corporativos pela facilidade de customização dos componentes desenvolvidos e disponíveis para uso.

Até a data de 12 de março de 2013, a aplicação derivada disponível no site do IBAMA contava com 9097 visitas e está disponível no endereço <http://siscom.ibama.gov.br/downloads/flex/> para *download*. Já a aplicação customizada para a Seplan-TO contava com 1442 visitas.

ANEXO 1-

XGIS Flex: A Free and Open Source Framework for the Development of the Geographic Information Systems on the Web

[artgo publicado no Geoprocessing 2013]

Abstract - Geographic Information Systems on the web (web GIS) are currently implemented for different purposes. This paper presents a framework to develop web GIS with free and open source software, for interoperability between different sources of heterogeneous data, as well as the visualization of maps in different formats with components implemented with a Web 2.0 concept. We presented two case studies that implemented a web GIS to Japan International Cooperation Agency – JICA together with the Secretary of Planning and Modernization of Public Management by the Government of the State of Tocantins – Seplan-TO and a web GIS for the Brazilian Institute of the Environment and Renewable Natural Resources – IBAMA.

A.1 Introdução ao artigo publicado no Geoprocessing 2013

Neste anexo, apresento o artigo publicado no Geoprocessing 2013 em Nice na França. Este artigo serviu de base para a construção do artigo submetido ao Journal of the Brazilian Computer Society e apresenta uma versão do *framework* que ainda não dispunha de instrumentos mais complexos de vetorização e inserção de dados geográficos por meio da interface web, assim como, suportava menos formatos de intercâmbio de informações.

Outro e importante componente que estava em desenvolvimento e atualmente está disponível com mais funcionalidade e modelos de gráficos no *framework* é o componente de geração de gráficos por meio de consultas espaciais aleatórias.

XGIS Flex: A Free and Open Source Framework for the Development of the Geographic Information Systems on the Web

Mariano F. Pascual, George Sand
L. Araújo
Geosciences Institute
University of Brasilia
Camp. Darcy Ribeiro –DF– Brazil
marianofpascual@ibama.gov.br
georgesand@unb.br

Maristela Holanda
Depart. of Computer Science
University of Brasilia
Camp. Darcy Ribeiro –DF– Brazil
mholanda@unb.br

Edson E. Sano
Inst. of the Environment and
Renewable Natural Resources
SCEN trecho 2 Ed.Sede – DF – Brazil
edson.sano@ibama.gov.br

Abstract—Geographic Information Systems on the web (web GIS) are currently implemented for different purposes. This paper presents a framework to develop web GIS with free and open source software, for interoperability between different sources of heterogeneous data, as well as the visualization of maps in different formats with components implemented with a Web 2.0 concept. We presented two case studies that implemented a web GIS to Japan International Cooperation Agency – JICA together with the Secretary of Planning and Modernization of Public Management by the Government of the State of Tocantins – Seplan-TO and a web GIS for the Brazilian Institute of the Environment and Renewable Natural Resources – IBAMA.

Keywords-GIS; web; Flex; open source

INTRODUCTION

A Geographic Information System (GIS) is frequently defined as the combination of a database management system, a set of operations for exploring data, and a graphic display system that is used for geospatial analysis. These GIS analyses have the main purpose of supporting decision making and modeling some of the possible consequences of those decisions [2][4][7][27][30]. GIS environments are also cartographic tools that facilitate creating maps and examining the impact of changes to the maps interactively [21][26][14][27][17].

GIS on the web (web GIS) is currently being developed, and one challenge in that environment is interoperability among heterogeneous databases. For interoperability of the data, web services technology is being used [10]. The standard set by the Open GIS Consortium (OGC) proposes open service architecture of web GIS to support data-interoperability. And, it suggests the use of Geographic Markup Language (GML) based on XML to exchange the data between the web client and the web GIS [13][16]. The REST [22] technology is also used to support interoperability with geographical databases.

For the visualization of maps in an interactive way, Web 2.0 technology is being applied through different components of Rich Internet Application (RIA). As is observed in [15], this technology is being applied in the development of web GIS. Web mapping applications such as

Google Maps, Google Earth, Microsoft Bing Maps and Yahoo Maps are usually considered good examples of Web 2.0 [10].

In this environment, the free and open source software FOSS community has developed solutions for GIS implementation, database management systems with free spatial extension and high performing map servers. One of the elements that facilitated the distribution and use of these free tools was the standard defined for interoperability between data and the applications used for the development of a GIS [6] [29].

This paper presents XGIS Flex — a framework to develop web GIS with free and open source software, with interoperability between different sources of heterogeneous data, as well as the visualization of maps in different formats whose components are implemented with a Web 2.0 concept. This framework was used to implement two case studies presented in this paper.

The content of this paper is divided into the following sections: 2 – basic concepts about web GIS are presented; 3 – the XGIS Flex framework is defined; 4 – Related Works, analyses; 5 – Case Study, where the architecture was used to develop the GIS for the Japan International Cooperation Agency – JICA in partnership with the Secretary of Planning and Modernization of Public Management by the Government of the State of Tocantins – Seplan-TO and of the Brazilian Institute for the Environment and Renewable Resources – Ibama; and finally, 6 – Conclusions.

GEOGRAPHIC INFORMATION SYSTEM ON THE WEB

Geographic Information System on the Web is any GIS that uses web technologies. The simplest form of web GIS should have at least a server and a client, where the server is a Web application server, and the client is a web browser, a desktop application, or a mobile application [10][5].

The architecture of a web GIS is most commonly based on the use of three layers: User Interface Layer, Application Server Layer and Database Layer [3][28][9]. Some authors considered four layers, where the integration layer is added on the web GIS architecture, which is based on web services [32].

The User Interface layer serves as a graphic user interface (GUI) to present the result of spatial data, allowing the end users to interact with the backend services. The Application Server layer communicates with multiple data sources via the data integration layer, and interacts with end users to analyze and manipulate data coming from data provider services. The Database layer of data provider services is a set of remote data provider services for data sharing. Each data provider service offers a set of interfaces through which client applications can pull remote data in and manipulate the data.

XGIS FLEX FRAMEWORK

The XGIS framework was developed to be a free and open source option for the platforms developed in Flex. The XGIS enables the navigator for use in RIA and high performance Web 2.0 concept environments. There is interaction with OGC standard web services, such as WMS, WFS, WFS-T e WCS, REST, as well as files such as GPX, KML, SHP and other formats including JSON and GeorSS. With XGIS it is possible to visualize data from different web services. It is not aim of the XGIS to offer web services. Besides visualization, the XGIS has some functionality, such as, extract data from many formats, measure distances, area and several graphics. In the next section, each one of these functions is shown through the components.

The XGIS is strongly linked and integrated to the Map Server Geoserver (Java), which is a high performance interactive map server as presented in [25], having interoperability of the open source with multiple connectors for the sources of data such as PostGIS, Oracle, SQL Server, DB2, SDE, shapefiles and others. With this framework it is also possible to visualize data coming from other map servers, such as ArcGIS Server or MapServer and fuse services, such as, Microsoft Bing, OpenStreet Maps (OSM), Yahoo Maps and others.

XGIS Flex Framework Components

The XGIS Framework has various components. These components were developed based on the architecture presented in [23]. Figure 1 presents the components, where the XGIS framework components are represented by strong lines, and dashed lines are presented for the software used in the web GIS environment. Each one of the components of the framework is described below.

The GPX, KML and Shapefile Overlay Component enables the opening of shapefile files and their attributes, providing the overlay of geometries available in .shp files in the web Flex environment. The constant attributes in .dbf files are presented in a tabular format and related to the correspondent geometry. The features that can be viewed are: line, point, or polygon. If the set of files is projected in a system distinct to the map base, the inclusion of the compacted file .prj is necessary for the system to complete re-projection. This component reaches a large quantity of Garmim brand GPS field equipment users and, therefore, this was strongly recommended in the development of this component, which makes the overlay of files downloaded

directly from equipment of this type possible. All of the waypoints available to track overlays of a line are presented, in which the initial point is presented in green, the path in yellow and the end in red. The attributes given to the paths are shown in a floating table. The KML Overlay is a component that provides the opening and comparison of the routes generated in Google Map platforms, and also in simple files in KML format; the available attributes in the file referenced are also presented in splints through floating panels.

The Vectorization component class serves the vectorization and release in distinct database formats, such as lines, points and polygons. Algorithms for the calculation of the area and perimeter are also used in the class; the user can opt to save the designed features on a local disc in JSON format or directly in the database. When drawing, it is possible to add or edit new vertexes and exclude former ones or all polygons, lines or points drawn.

The Export Data Component is totally integrated with Geoserver Java map server. Through this component, it is also possible to make the selection and later export and download layers or a part of them in diverse formats such as shapefile, csv, pdf, xls, kml, kmz, jpg, png.

The Navigation and Data Tabs Component is a presentation component, in which formatting grids were built with the aim of improving the visual aspect of register lists extracted from the database. There is frequent interaction between the navigation and consultation of attributes related to the geometry visualized.

The Treatment of Geographic Database Component aims at adopting the tool of a set of classes capable of treating incoming information from the interface, which will be sent to the database. With this tool one can select which type of database will be used and the classes will be the interactions necessary for a correct treatment of distinct types between the manufacturers of DBMSs. Treatment of geographic features is a set with the minimum rules necessary to avoid classical errors at the moment of vectorization, such as the creation of polygonal ties.

The Charts are tools for which geographic database tables, or simply web services about them, can be chosen by way of selection boxes, from which one can select numerical attributes and vectorize an area on the screen resulting in charts. These are interesting analytical tools for statistical data, however with geographic presentation and selection. Taking advantage of the available functionality in the SDK Flex, the following types of graphics were used: lines, columns, bars, pizza, candlestick and areas.

Media Overlay is the component responsible for the overlaying of videos, photography and documents over maps, for the most part, representing a strong Web 2.0 concept. For the development of this component, it was necessary to map and treat the types of media data available in the main DBMSs on the market so that the consultation and overlaying of these on the maps become possible.

XGIS to Develop web GIS

The XGIS framework was designed to be user friendly. If the user of the XGIS is not a software developer, he or she will still be able to customize an application easily and quickly, needing only to edit XML extension files. With the configuration files in XML one can define which map services can be used, in which tables it will be possible to edit data, titles and subtitles of the system, logotypes or brands, data subtitle, symbols, and the individual configuration of each component developed.

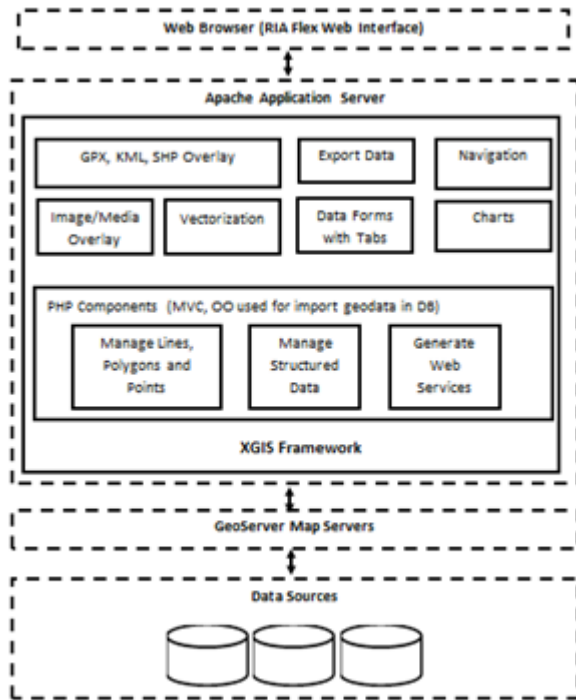


Figure 1 – Components of the XGIS.

Figure 2 lists a piece of the code of the XML file of the configuration of layers to be shown on the spatial interface with tags already configured.

```
<?xml version="1.0" encoding="UTF-8"?>
<camadas>
  <camada>
    <name>Estados</name>
    <url>http://corredorjalapao.seplan.to.gov.br:8080/geoserver/jalapao/wms</url>
    <layers>jalapao:estados</layers>
    <projection>EPSG:900913</projection>
    <format>image/png</format>
    <maxExtent>-180,-90,180,90</maxExtent>
    <version>1.1.0</version>
    <visible>true</visible>
    <transparent>true</transparent>
    <tiled>true</tiled>
  </camada>
  <camada>
    ...
  </camada>
  ...
</camadas>
```

Figure 2 – XGIS Configuration File.

Besides being able to quickly implement an interface of interactive maps, another feature of the framework is in the

engine of web service for the interaction between the web forms projected in the Flex environment and different types of databases. The engine was built in PHP language and treats connections with the SGBDs MySQL, PostgreSQL, SQLite, Oracle and SQL Server and its spatial extensions, thus, it is possible to have a programming language for developing new components that interact with textual and geographic data. In case the user of the Framework does not want to use the PHP motor incorporated, he can use whichever programming language he wants to Interact with the maps: C#, Java, Phytion, among others. The tools just need access to the data via web-sevrices that can be easily available in other languages.

The layer of data presentation always exhibits a standardized layout, as shown in Figure 3, making the use of the application easier. This characteristic is possible because the components that were developed in Flex using ActionScript follow the MVC—Model, Vision and Control model. The developer has only to design the form using a graphic environment and make it available to the web service corresponding to the database tables he or she wishes to interact with using and extending the set of codes developed. It does not matter which DBMS the user uses, it's merely necessary to alter the data that pertains to the connection, such as user, password, IP address and type of DBMS to be connected.

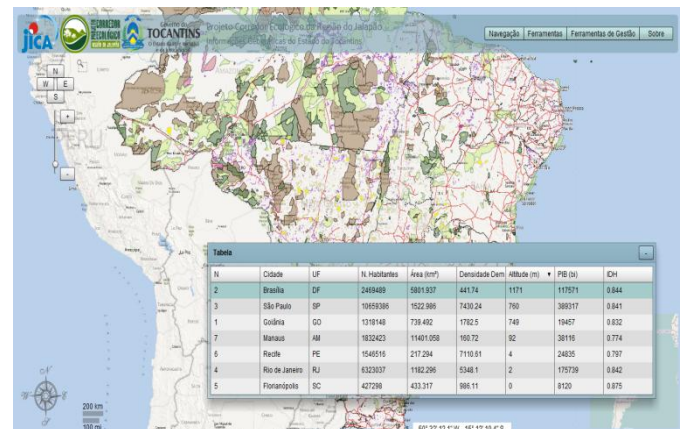


Figure 3 – XGIS Standard Layout.

IMPLEMENTATION OF THE XGIS FRAMEWORK

Some free and open source libraries were used for the development of the XGIS components. The highlighted libraries described below are among the libraries used.

The SDK Flex [1] has a set of components available, including: buttons, list boxes, tree-views, data grids, text control objects, layout containers, graphic components, animations, status applications, modal dialogue boxes, among others. The Openscales libraries [18] were also widely used and an extension of the majority of the classes of the library, as well as the creation of new components and classes.

Other sources and free components written in ActionScript were used and organized within the XGIS framework, such as, file reading components of extension

shp, shx and dbfs and, of the watermark insertion in the application [31].

The PHP components manage the entrance of vectoral data that are sent by web interface such as lines, point, polygons and projection systems. Textual data are also controlled, making not only the presentation of information over maps easier, but also the insertion, alteration, exclusion and consultation of the same directly from the data base.

RELATED WORKS

Different tools for aiding in the development of web GIS with free and open source software are found in the literature and there are proprietary tools with closed sources. Some of these tools are presented as follows.

The ESRI makes an API for Flex [8] available for developing web GIS with web 2.0 characteristics, however, it is a proprietary closed source framework. A negative point is the strong linkage existing between the ESRI framework and map services originating from ArcGIS Server servers, also proprietary and costly to implement.

Google has an environment available for development in Flex, Google Maps API for Flex [12], however, it is also proprietary. The great advantage of this environment is the popularity of its base maps, which have excellent quality since Google invests heavily in the acquisition of cartographic bases, and the service provides very high performance as well. The negative points are the low quantity of available functions, presenting itself more as a compiled library to be incorporated to another Flex application and its proprietary source is unalterable.

The i3Geo [24] is a web software based on a set of other free software, mainly Mapserver. The main focus is the availability of geographic data and a set of tools for navigation, analysis management, on demand map sharing, and management. It is strongly linked to MapServer, free standard web services management software OGC, but from the first generation not high performing nor created for editing geographic data via web, as is Geoserver.

Four libraries are considered free frameworks for web GIS development written in JavaScript: OpenLayers [19], GeoExt [11], OpenScale [18] and MapFish [20]. Each one of these is described as follows.

OpenLayers is a JavaScript library accessed as API, however, with an open source and one that currently presents as a library used mainly for the support and inclusion of maps on web pages, this is because of its versatility, able to adapt to diverse languages and modern web browsers. Another advantage is in the capacity of mash-ups between sources such as Google Maps, MsBingMaps, Yahoo Maps, OSM and others.

GeoExt presents itself as a JavaScript Toolkit for Rich Web Mapping Applications that is basically an OpenLayers library, but with resources that raise the level of the applications developed, making them closer to a desktop application, while still in a web environment. It is a recent project, still in its first versions.

Openscales is a framework written in ActionScript 3 with an LGPL license type. Its libraries are widely used in our

solution, but are limited to support the navigation maps. Classes used in the framework presented in this paper have been extended, the engine optimized and many additional components were created.

MapFish is a framework to be developed from the web applications written in Python. These new classes present functionality for the construction of applications of the web mapping type. MapFish makes a Java Script toolbox available composed of Openlayers, GeoExt and ExtJS.

Unlike the libraries listed above, the XGIS is a full framework for developing web GIS since it interacts manipulating textual and spatial data from different DBMSs, besides dealing with the rendering of maps and pictures, and interacts as a tool Web 2.0 RIA with photos, georeferenced video and documents. The main idea of XGIS is the possibility of accelerating the development of GIS applications for web environments that are easily integrated and do not require programming knowledge to implement, and always maintain a good visual presentation.

CASE STUDY

The XGIS framework was used in different GIS, as we can see in [33], [34], among others. In this article we present two systems that we consider the most complete in terms of use of framework functions, described as follows.

Description

The Framework was recently tested in the implementation of the two web GIS. The first, the JICA - Japan International Cooperation Agency, together with the Secretary of Planning and Modernization of Public Management of the Government of the State of Tocantins – Seplan—TO in the implementation of the Monitoring System of the Ecological Corridor of the Jalapão Region. The second one was implemented at the Brazilian Institute for the Environment and Renewable Natural Resources – Ibama making a new interface of maps from SisCom -- Shared System available, of which, among others, is responsible for the availability of information in embargoed areas.

Specifically in the case of the application of the Framework for JICA and the Government of the State of Tocantins, the set of components facilitated the integration of data from different sources. Both institutions dispute spatial data basically in file format, the majority being shapefiles, satellite images in TIF and geographic data in Oracle database with spatial extensions. Nonetheless, the creation of a geographic database with data already validated using PostgreSQL with spatial PostGIS was decided upon.

In this case, the entire application was customized and implemented in one day, having been necessary the creation of the web map services from the distinct sources of data using Geoserver and, later carry out the appointments within the application using the extension files XML. Other files from the same extension were also configured, aiming at altering the logotypes, brand names, title, and subtitle of the

application, addresses of services and dynamic captions, among others.

Evaluation

Figures 4 and 5 show two screens taken from the navigation of the application implemented. Figure 4 shows the web GIS with vectoral data only and some of their listed layers dynamically charged by a Geoserver server. The components, “Navigations and Data Tabs”, “Layers” and “Menus” are instanced together to the central motor of map navigation.

Figure 5 shows the result of a query in a vectoral database overlaid on the matrix data; they are basically images from the Alos satellite, Avnir sensor and images from the Microsoft Bing catalogue. The “Layers” component was used executing methods such as GetFeatureInfo for retrieving data regarding the layer selected, also it is possible to carry out queries using this same component by way of geographic selections, by simply selecting the area on the screen over which one you wish to research and

automatically the parameters are passed on by queries to the interactive map servers.

The result of the queries will always be a grid when the result obtained is greater or equal to two registers. In the Ibama case study, differently from the application implemented for the Jica with geographic extension of just one State, the application used the total extension of the country. The tools for generating graphics were activated and configured aimed at turning the application into a support system for making decisions in terms of the information related to the deforestation and embargoed areas.

Figure 6 shows a screen of the system implemented in the Center for Remote Sensing of the Institute at the moment of consulting georeferenced photography and videos. In this consultation, the components “Navigation and Data Tabs”, “Treatment of Geographic DataBase”, “Charts”, “Layers” and “Media Overlay” are active over the navigation motor.

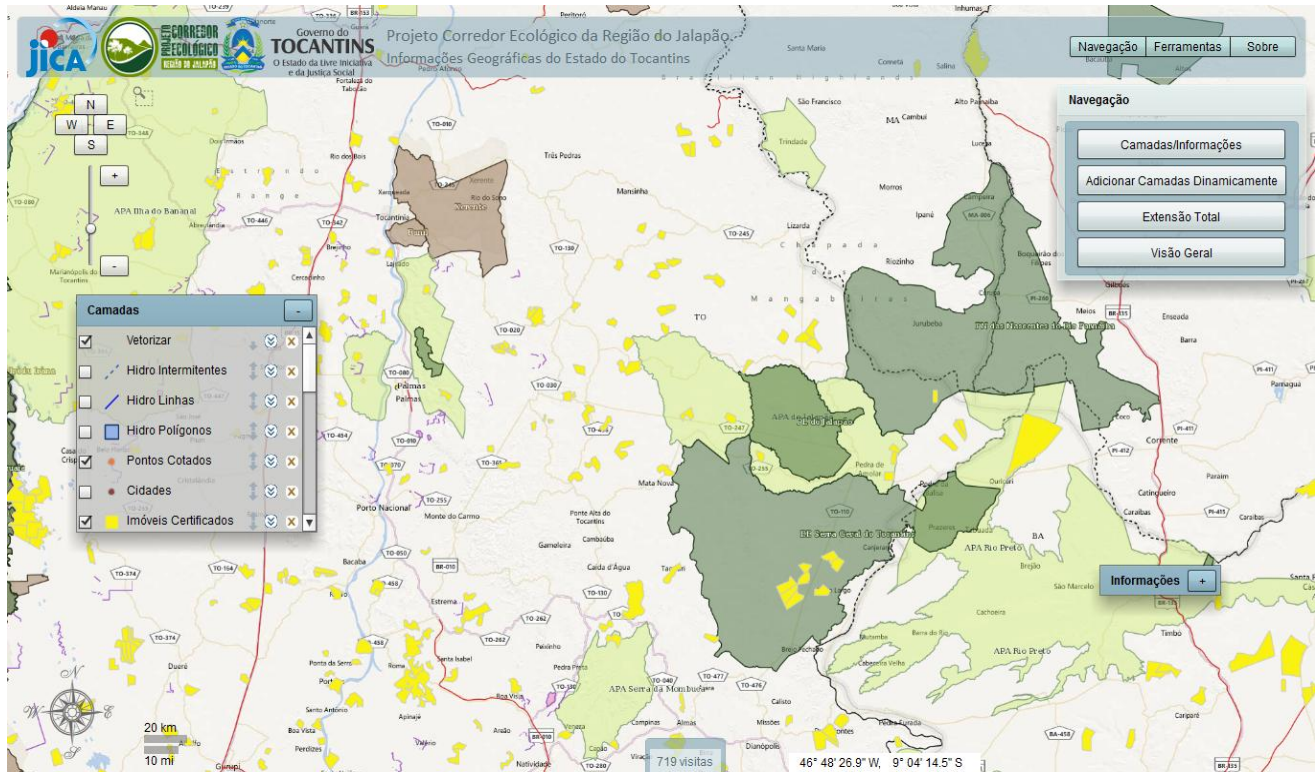


Figure 4 – Basic Navigation.

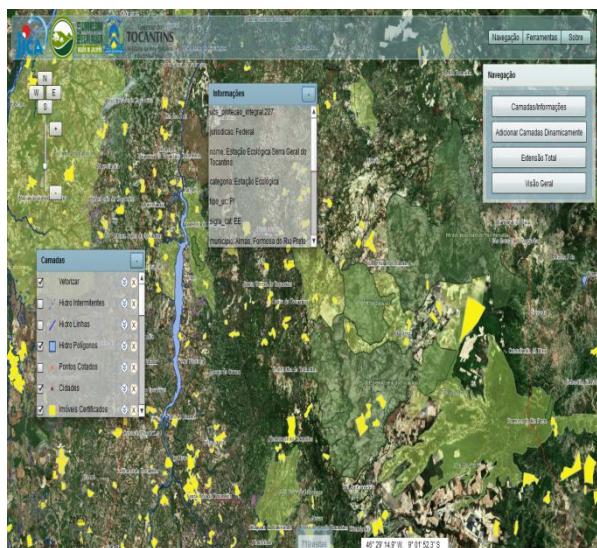


Figura 5 –Raster Navigation and Spatial Query.

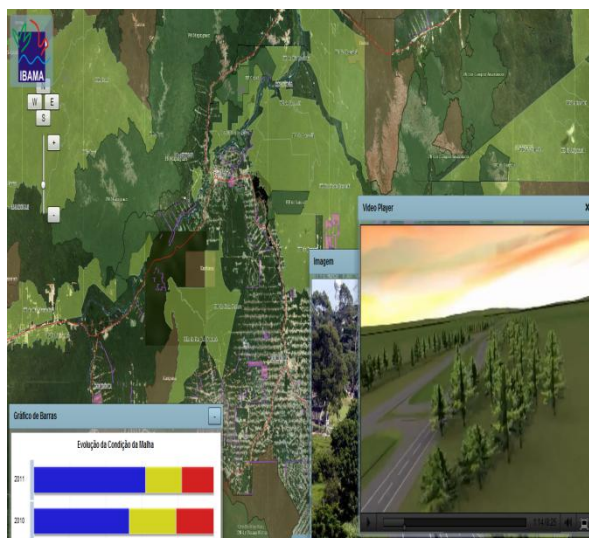


Figura 6 – Ibama Interface with Video Interaction/ Image.

CONCLUSION

Architecture presented in this paper proposes a tool of rapid implementation and availability of web GIS, with a set of services made available that can easily integrate data of structured systems, such as consumption of information originating from diverse data sources. Textual and vectoral data can be easily manipulated, making not only query possible, but also the insertion, alteration and deletion of information directly in different types of market SGBDs.

The visualization of different media, such as videos, photography, documents and tables originating from map databases was one of the examples of Web 2.0 architecture functioning that impressed users because of its high performance.

The next steps include the development and integration of a 3-D environment, to be written using SDK Flex and OpenGL, to the Framework map environment, as well as, integration with social network tools, also using ActionScript and integration with mosaics and 360° photography and panoramas obtained through Gigapan robots. For the test phase in the 3-D environment data originating from laser profiling will be done through the collection of aerophotogrammetrical material in Brasilia in 2010.

REFERENCES

- [1] Adobe, SDK Flex <http://www.adobe.com/devnet/flex/flex-sdk-download-all.html>, [accessed 2012-10-20].
- [2] Arenas, J., Zambrano, H. Web-based GIS Applications for Government. In Proceedings of the 3rd ICEGOV International Conference on Theory and practice of electronic governance, Bogota, Colombia, 2009.
- [3] Baumann, J. Future of Web GIS: An Interview with Pinde Fu. GeoConnection International Magazine, April, 2011.
- [4] Boucelma, O., Essid, M. A WFS-Based Mediation System for GIS Interoperability. ACM GIS'02, November 8–9, 2002, McLean, pages 23–28, 2002.
- [5] Bressan, T.. Desenvolvimento e integração de um ambiente SIGWEB com ferramentas de software livre. Master Thesis. Federal University of Santa Maria Brazil, 2010.
- [6] Câmara, G., Vinhas, L., Souza C. M. R. Free and Open Source GIS: Will There Ever Be a Geo-Linux? Geospatial Free and Open Source Software in the 21st Century. LNCS, pages 229–245., 2012
- [7] Dragičević, S., Balram, S., A Web GIS collaborative framework to structure and manage distributed planning processes. Journal of Geographical Systems. Springer-Verlag 6, pages 133–153, 2004
- [8] ESRI, ArcGIS API for Flex <http://help.arcgis.com/en/webapi/flex/>, [accessed 2012-06-10].
- [9] Frehner, M., Brandli, M., Virtual database: Spatial analysis in a Web-based data management system for distributed ecological data. Environmental Modelling & Software 21, pages – 1544–1554, 2006.
- [10] Fu, P., Sun, J.. Web GIS: Principles and Applications. ESRI Press, 2010
- [11] GeoExt. JavaScript Toolkit for Rich Web Mapping Applications. <http://geoext.org/>, [accessed 2012-10-20].
- [12] Google. Maps API for Flash <https://developers.google.com/maps/documentation/> [accessed 2012-10-20].
- [13] Kim, D., Kim, M.. Web GIS Service Component Based On Open Environment. In Proceedings of IGARSS Geoscience and Remote Sensing Symposium. IEEE. Pages, pages 3346–3348, 2002.
- [14] Longley, A., Goodchild, F., Maguire, J., Rhind, J., Geographical Information Systems and Science. 2nd Edition. John Wiley & Sons, 2005.
- [15] Majchrzak, A., More, P., Emergency! Web. 2.0 the Rescue! . Communications of the ACM, vol. 54, n. 4, pages 125–132, 2011
- [16] OGC. OpenGIS® Geography Markup Language (GML) Encoding Standard, 2007
- [17] Olivera, H., Holanda, M. A GIS Web with Integration of Sheet and Soil Databases of the Brazilian Cerrado. 2012. In: 7ª Conferência Ibérica de Sistemas e Tecnologias de

- Informação - CISTI, Madri. Lisboa: AISTI, pages 735-740, 2012
- [18] Openscales, <http://openscales.org/>, [accessed 2012-10-20].
- [19] OSGeo. Open Source Geospatial Foundation. OpenLayers: Free Maps for the Web. <http://openlayers.org/>, [accessed 2012-10-20].
- [20] OSGeo. Open Source Geospatial Foundation. Mapfish. <http://mapfish.org/>, 2012a
- [21] Ostergren, M., Hemsley, J., Belarde-Lewis, M., Walker, S., A Vision for Information Visualization in Information Science. iConference, Seattle, USA, pages 531-537, 2011.
- [22] Page, K., Roure, D., Martinez, K.. REST and Linked Data: a match made for domain driven development? In: Proceedings of the Second International Workshop on RESTful WS-REST; Hyderabad, India, 2011.
- [23] Pascual, M. F., Alves, E., França, G. S., Roig, H. L. R., T. Almeida; Holanda, M. An Architecture for Geographic Information Systems on the Web - WebGIS. In: GEOProcessing, The Fourth International Conference on Advanced Geographic Information Systems, Applications, and Services, Valencia, pages 209-214, 2012.
- [24] PSPB. Portal do Software Público Brasileiro. I3GEO http://www.softwarepublico.gov.br/ver-comunidade?community_id=1444332, [accessed 2012-10-20].
- [25] Rao, S. and Sri Vinay. Choosing the right GIS framework for an informed Enterprise Web GIS Solution. 13 Annual International Conference and Exhibition on Geospatial Information technology and Applications, India, pg. 19 -21, 2010
- [26] Rhyne, M. Visualizing Geospatial Data.. In Proceedings of ACM SIGGRAPH GRAPH International Conference on Computer Graphics and Interactive Techniques, 2004
- [27] Rigaux, P., Scholl, M., Voisard, A. Spatial Databases with Application to GIS. Elsevier Science, 2002.
- [28] Shunfu H..Web-Based Multimedia GIS for the analysis and visualization of spatial environmental database. In Proceedings of Symposium on Geospatial Theory, Processing and Applications, 2002.
- [29] Steiniger S., Hunter, A. Free and Open Source GIS Software for Building a Spatial Data Infrastructure. Springer, 2012.
- [30] Wolfgang, R.. Principles and Application of Geographic Information Systems and Internet/Intranet Technology. In Proceedings New Information Processing Techniques for Military Systemns. Istanbul, Turkey, 2000.
- [31] Vanrijskom <http://code.google.com/p/vanrijskom-flashlibs/>, [accessed 2012-10-20].
- [32] Zongyao, S., Yichun, X., Design of Service-Oriented Architecture for Spatial Data Integration and Its Application in Building Web-based GIS Systems. Geo-spatial Information Science, 2010.
- [33] Santana, E., Siqueira, D.EcoGIS: Sistema de Informação Geográfica para visualização de Dados do Ecossistema do Cerrado Brasileiro. In Proceedings IV GeoNordeste Simpósio Regional de Geoprocessamento e Sensoriamento Remoto, 2012, pages 843-848, 2012.
- [34] Olivera, H. V., Holanda, M. A GIS Web with integration of sheet and soil databases of the Brazilian Cerrado. In Proceedings Information Systems and Technologies (CISTI), 2012 7th Iberian Conference on CISTI 2012, pages 1-6.

Annex A - Classes of connections of the database

```
...
case 'POSTGRES':
    if(!defined('PORT'))
    {
        define('PORT','5432');
    }
    if( ! self::getDataBaseName() )
    {
        $configErrors[] = 'Falta informar o nome do DATABASE';
    }
    if( count($configErrors) > 0 )
    {
        self::showExemplo('POSTGRES',$configErrors);
    }
    self::$dns='pgsql:host='.HOST.';dbname='.self::getDataBaseName().';port='.PORT;
RT;
break;
//-----
case 'SQLITE':
    $configErrors = null;
    if( !defined('DATABASE') )
    {
        $configErrors[] = 'Falta informar o caminho do banco de dados.';
    }
    if( count($configErrors) > 0 )
    {
        self::showExemplo('SQLITE',$configErrors);
    }
    if( !file_exists(DATABASE) )
    {
        $configErrors[] = 'Arquivo '.DATABASE.' não encontrado!';
    }
}
```

```

self::$dns='sqlite:'.DATABASE;
break;
//-----
case 'ORACLE':
    if(!defined('PORT'))
    {
        define('PORT','1152');
    }
    if( !defined('SERVICE_NAME') )
    {
        $configErrors[] = 'Falta informar o SERVICE_NAME';
    }
    self::$dns="oci:dbname=(DESCRIPTION =(ADDRESS_LIST=(ADDRESS
= (PROTOCOL = TCP)(HOST = ".HOST.")(PORT =
".PORT.)))(CONNECT_DATA =(SERVICE_NAME =
".SERVICE_NAME.))));";
break;
//-----
...

```

Annex B - Class of insertion of geographical data in the DBMS

```

...

// complex type de retorno entrada
$server->wsdl->addComplexType(
    'ctWayPoints',
    'complexType',
    'struct',
    'all',
    "",
    array(
        'codigo_tipo_gpx'=> array('name' => 'codigo_tipo_gpx', 'type' =>
'xsd:int'),
        'obs'=> array('name' => 'obs', 'type' => 'xsd:string'),
        'shape'=> array('name' => 'shape', 'type' => 'xsd:string'),
        'tipo_geo'=> array('name' => 'tipo_geo', 'type' => 'xsd:string')
    ));

// complex type de saida
$server->wsdl->addComplexType(
    'ctWayPointsReturn',
    'complexType',
    'struct',
    'all',
    "",
    array('mensagem' => array('name' => 'mensagem', 'type' => 'xsd:string'))
);

// Registrar o servico
$server->register('saveWayPoints',
    array('entrada' => 'tns:ctWayPoints'),// input parameters
    array('saida' => 'tns:ctWayPointsReturn'),// output parameters
    'urn:hexWS',// namespace
    'urn:hex#saveWayPoints',// soapaction
    'rpc',// style

```

```

        'encoded',// use
        'Gravar WayPoints'// documentation
    );
    ...
    function saveWayPoints($parametros)
    {
        if ($parametros['tipo_geo'] == "lin")
        {
            $res = TPDOConnection::executeSql("INSERT into hex.tmp_gpx_lin
(codigo_tipo_gpx,          obs,          shape)          VALUES
(?,?,GeometryFromText('LINESTRING('.$parametros['shape'].)'),4674))",
            array($parametros['codigo_tipo_gpx']
,$parametros['obs']));
        }
        if ($parametros['tipo_geo'] == "poi")
        {
            $res = TPDOConnection::executeSql("INSERT into hex.tmp_gpx_pon
(codigo_tipo_gpx,          obs,          shape)          VALUES
(?,?,GeometryFromText('POINT('.$parametros['shape'].)'),4674))",
            array($parametros['codigo_tipo_gpx']
,$parametros['obs']));
        }
        if (!$res)
        {
            return Array( 'mensagem' =>'Erro na inclusão do waypoint!
codigo_tipo_gpx='.$parametros['codigo_tipo_gpx'].' ,   obs='.$parametros['obs'].' ,
shape='.$parametros['shape'].' , tipo_geo='.$parametros['tipo_geo']);
        }
        return Array('mensagem' => 'Ok');
    }
    ...

```

Annex C - XML of the configuration of the layers

```
<?xml version="1.0" encoding="UTF-8"?>
<camadas>
  <camada>
    <name>Nasa</name>
    <url>http://openscales.org/geoserver/ows</url>
    <layers>blumarble</layers>
    <projection>EPSG:900913</projection>
    <format>image/jpeg</format>
    <maxExtent>-180,-90,180,90</maxExtent>
    <version>1.1.1</version>
    <visible>>false</visible>
    <transparent>>true</transparent>
    <tiled>>true</tiled>
  </camada>
  <camada>
    <name>Agglomerado Rural Isolado</name>
    <url>http://siscom.ibama.gov.br/geoserver/cemam/wms</url>
    <layers>cemam:agglomerado_rural_isolado</layers>
    <projection>EPSG:900913</projection>
    <format>image/png</format>
    <maxExtent>-180,-90,180,90</maxExtent>
    <version>1.1.1</version>
    <visible>>true</visible>
    <transparent>>true</transparent>
    <tiled>>true</tiled>
  </camada>
  <camada>
    ...
  </camada>
</camadas>
```