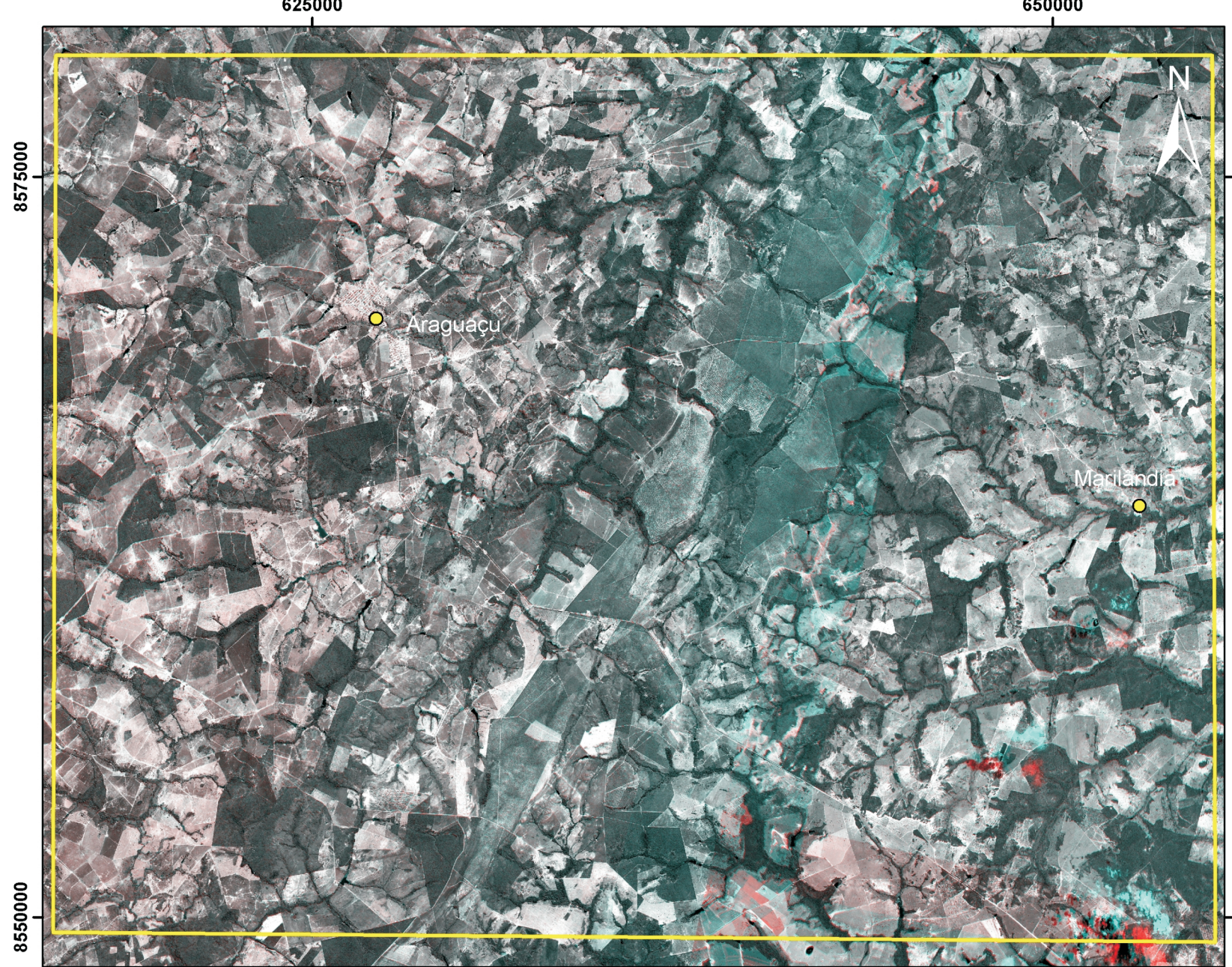
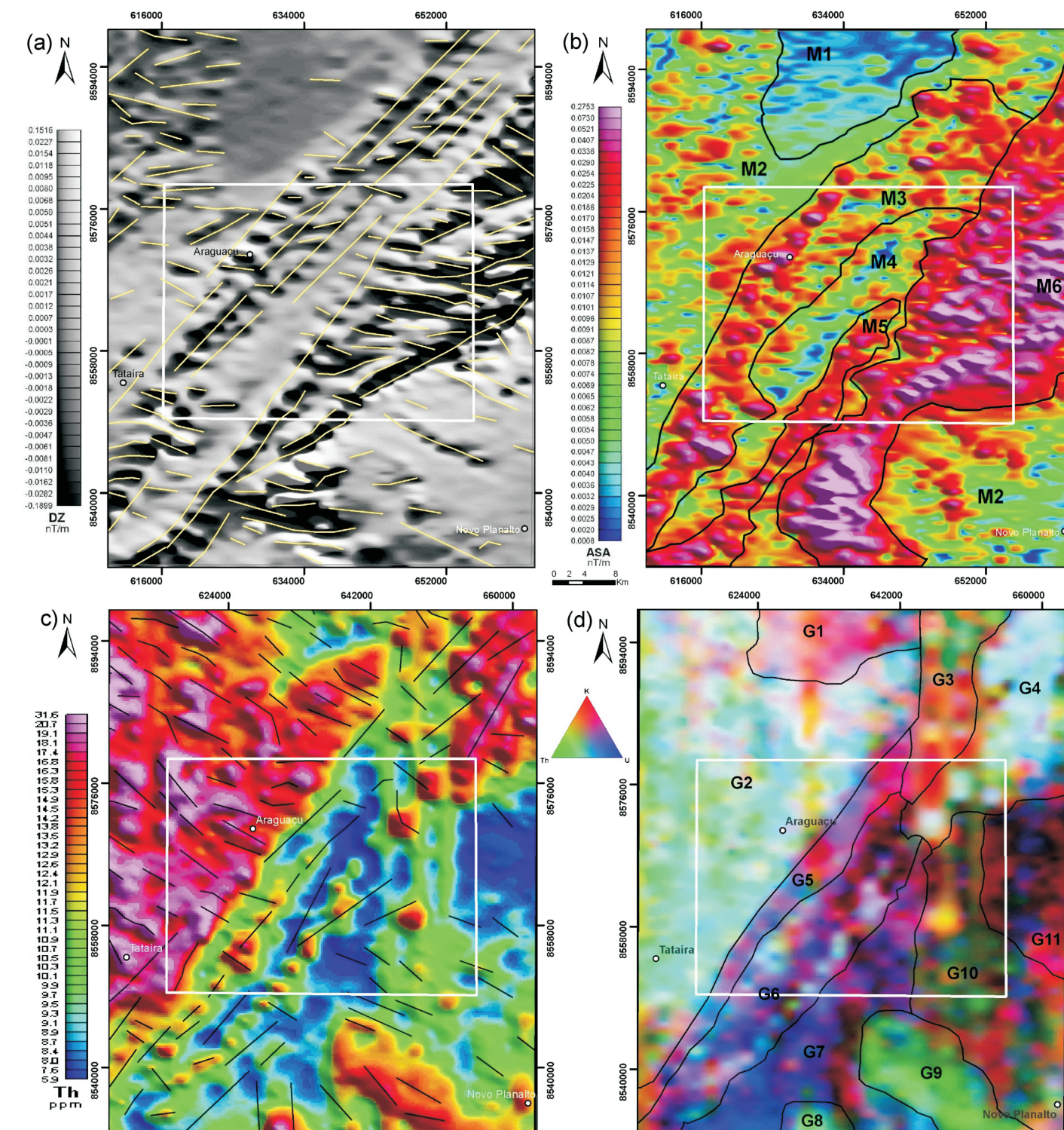


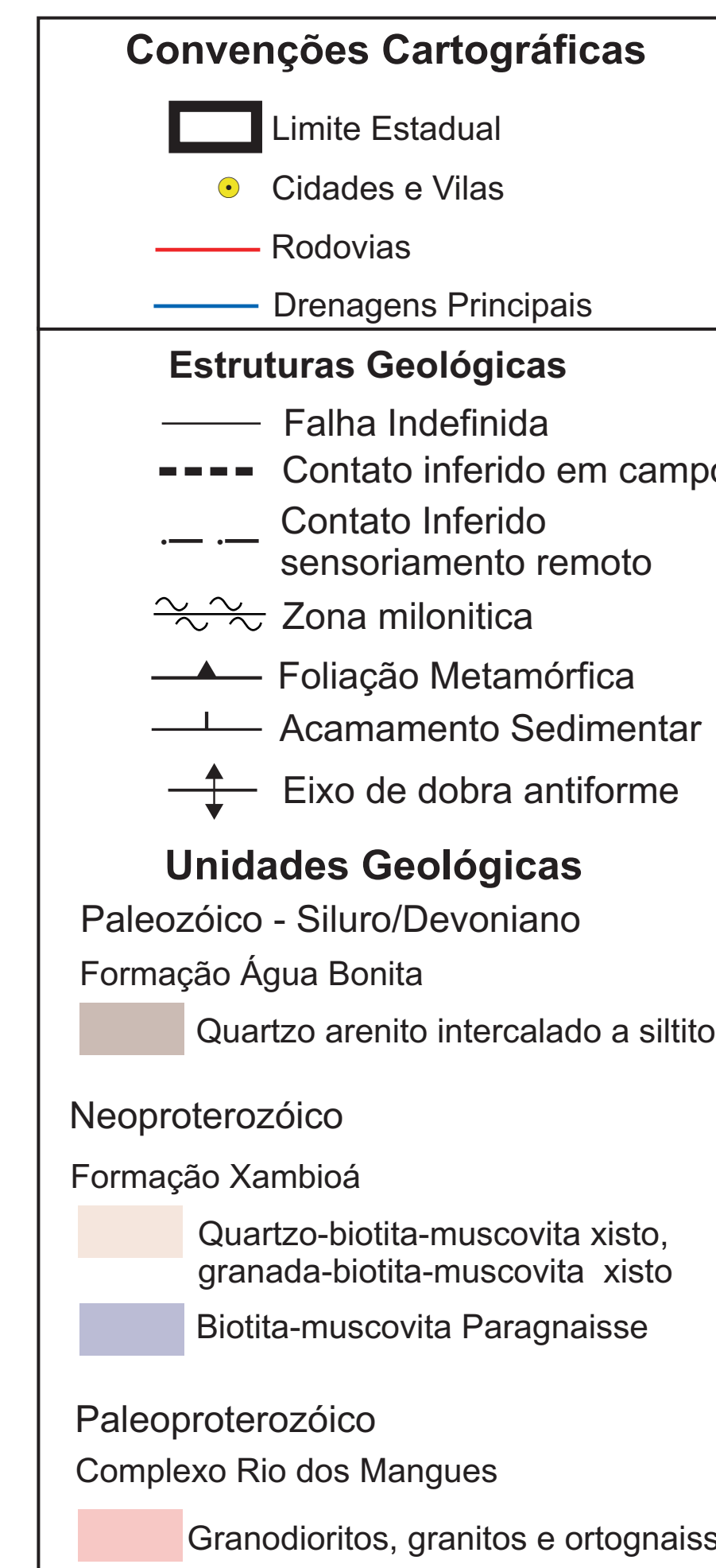
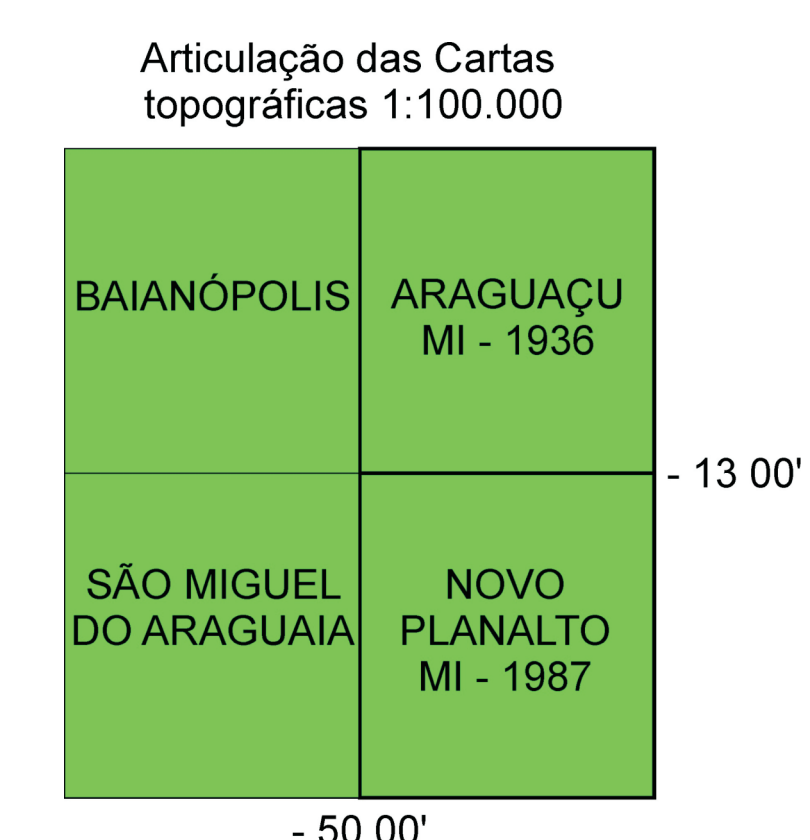
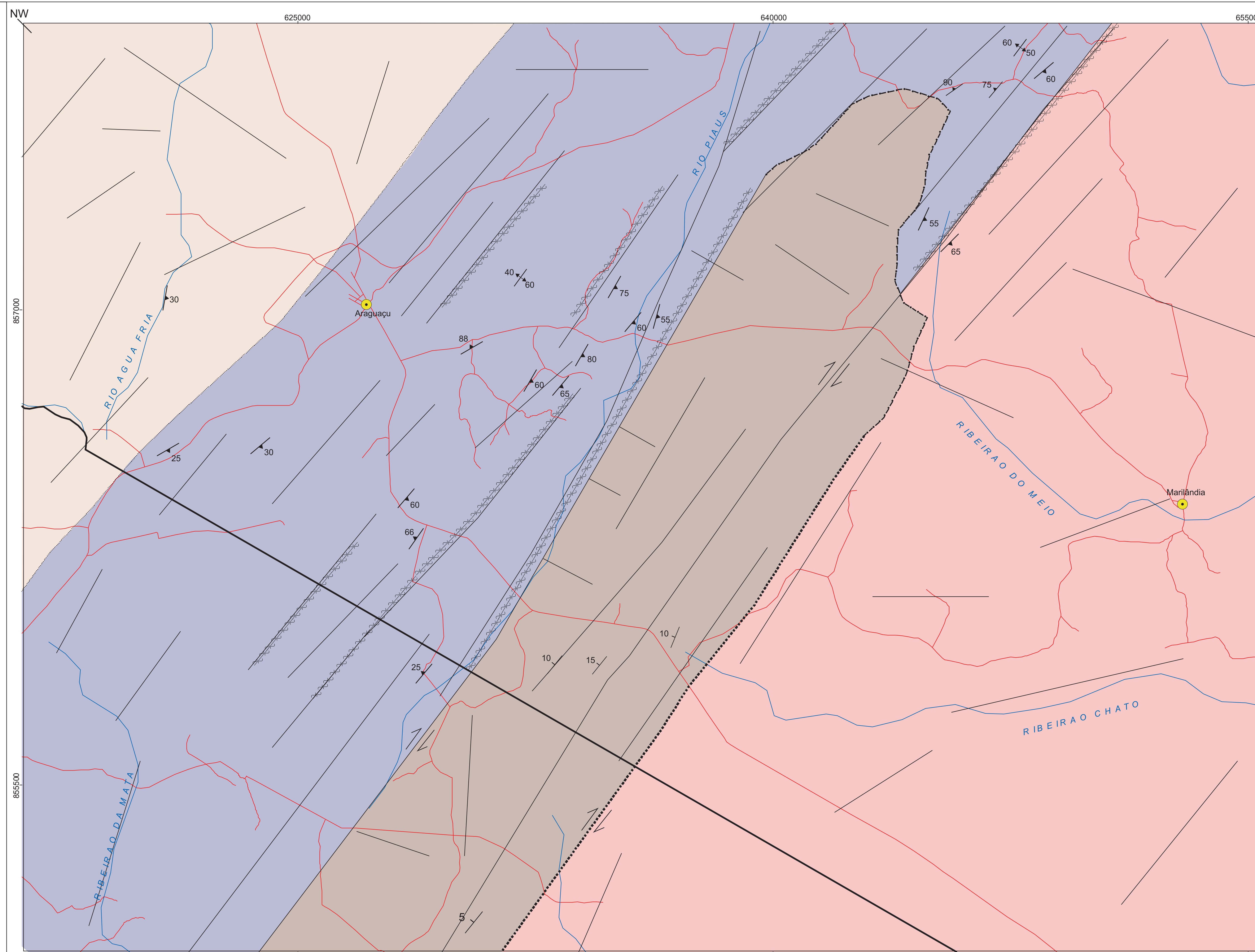
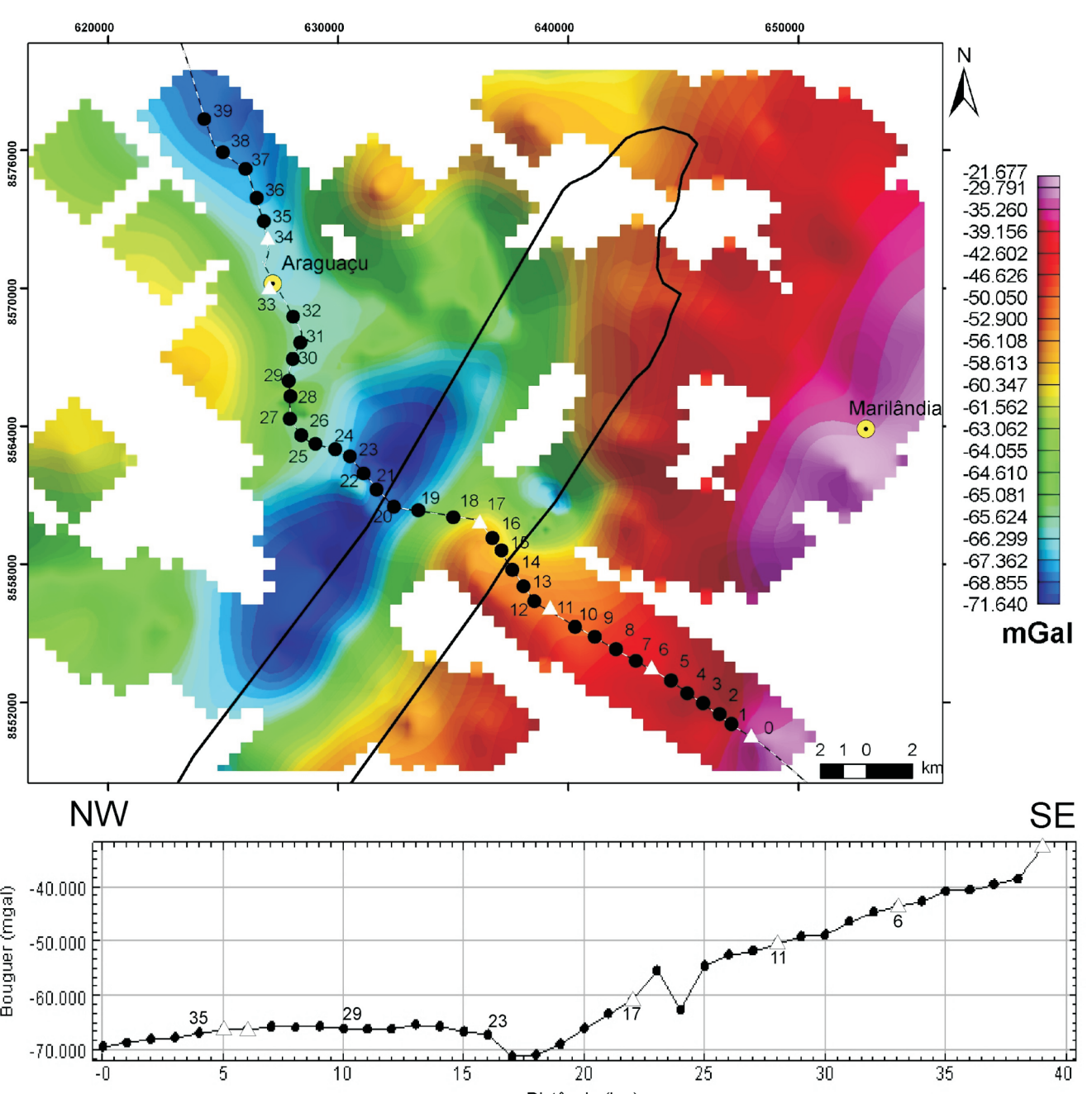
Imagem estereoscópica do Satélite Alos



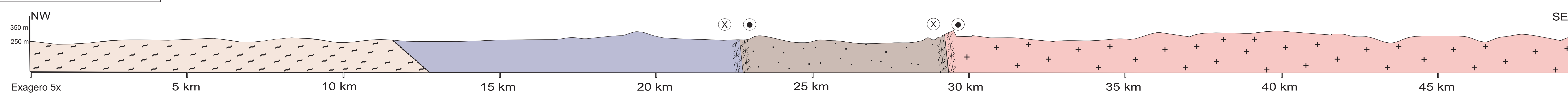
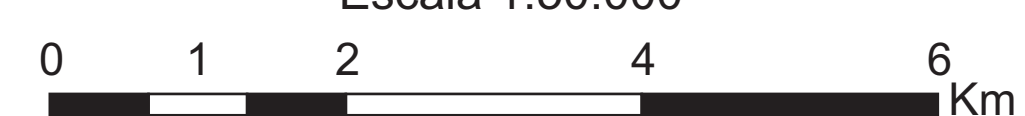
Interpretação dos Dados Geofísicos do PGBC



Mapa de Anomalias Bouguer



Escala 1:50.000



Disertação de Mestrado - Programa Geociências Aplicadas
 Mapeamento Geológico e Gravimetria da Porção Central do Graben de Água Bonita, Sudoeste de Tocantins
 Diogo Luiz Orphão de Carvalho
 Orientador: Prof. Dr. Paulo Roberto Meneses (UnB)
 Co-orientador: Prof. PhD. José Oswaldo de Araújo Filho (UnB)